

(entered)

<b>Locus</b> W 9800	<b>Dor</b> 19 92	<b>Fld</b> G <sub>1</sub>	<b>Sq</b> AI32	<b>Loc. type</b> Wall
<b>Open</b> 27/97/92	<b>Date</b>	<b>High at</b> 13.45 W	<b>Low at</b> 13.09 C	<b>Seals:</b> <sup>NONE yet</sup> <u>    </u> <u>    </u> <u>    </u> <u>    </u>
<b>Close</b> 14/08/92		<b>High at</b> 12.53 W	<b>Low at</b> 12.48 E	<b>Sealed by:</b> <u>    </u> <u>    </u> <u>    </u> <u>    </u>
<b>Floor:</b> type <u>  </u>				<b>Locl</b> 9762, 9756, 9765, 9779
<b>Length</b> 2.0	<b>Width</b> 0.3		<b>Vol</b>	<b>above</b> <u>    </u> <u>    </u> <u>    </u> <u>    </u>
<b>Value</b> 4	<b>Remove</b> <u>  </u> / <u>  </u> / <u>  </u>		<b>Drawn?</b> YES	<b>below</b> <u>    </u> <u>    </u> <u>    </u> <u>    </u>
<b>Photo #(1)</b> 86509		<b>Photo #(2)</b> 86510		<b>Locl</b> <sup>NONE yet</sup> <u>    </u> <u>    </u> <u>    </u> <u>    </u>
<b>Written by:</b> RAT		<b>Checked by:</b> JRZ		

Unit	Phase	Stage	Stratum	PoM
<b>Summary</b>				

**Opened:** In excavating [L9756], [L9765], [L9779], and [L9762], came down upon large stones in South bank of AI 32; opened [W9800]. [W9800] not recognized as a wall until those loci had been excavated.

**Limits (N)** Bounded by [L9765] and loci below, and by pit [L9762] excavated

**(S)** Bounded by South bank of AI32

**(E)** Bounded by East bank of AI32

**(W)** Bounded by [L9765] and loci below

**Closed:** End of Season - not closed

**Matrix:** Stone wall or socle, consisting of at least 4 courses; lowest excavated course - double-head sized stones; penultimate course - head to double-head sized stones; next course - head sized and flat along stones with rubble packed in upper course - preserved at South East end, double to triple head sized stones; Western end of [W9800] may form a doorway - squared-off edged stone, ca. 60 X 30 cm, possible threshold stone, ca.

**Relations:** Pit [L9762] covers, but does not seal, the Eastern end of [W9800]. [L9756] covers, but does not seal, the western tip of [W9800]; [L9765] covers, but does not seal, the Western 2/3's of [W9800]; [L9779] covers, but does not seal, the lowest portion of [W9800] (to that level). [W9800] was not recognized as a wall until [L9756], [L9765], and [L9779] had been excavated. Before that, the stones of [W9800] had seemed to be merely a tumble of stones in the destruction debris. [W9800] seals unnamed loci below. To the North pit [L9762] probably reaches [W9800], since three double-head sized stones, presumably from [W9800] were found in a tumble in pit [L9762].

To the South, [W9800] continues into the South bank of AI32.

To the East, [W9800] continues into the East bank of AI32.

To the West, [W9800] is reached by leveling locus [L9756] and by destruction layer loci [L9765], [L9779], and [L9795]. [L9795] could not be traced as reaching [W9800], though it is very likely that it did. [L9812] definitely reaches [W9800].

Photos: 86511-86512; 86527-86532

**Additional Observations/Value:** Because of its relations to adjacent destruction debris loci and since it seals material below, of very high value.

# Sketch plan

A132



▨ L9756  
L9745  
L9779

▨ L9795 ••• F9795

--- F/L9812

1:100

N↑



86509

Photo

## Section

E Belt

13.00

(1:50)

12.40



Facing South

## Section



Locus WJ 9899	Dor 1994	Fld 6	Sq A13, 14, 4332	Loc. type STONE WALL CARD II
Open	Date 12/17/1	High at 13.83 W	Low at 12.92 E	Seals: _____
Close	9.5/0.8/9.4	12.39 N.E	12.40 S.W	Sealed by: _____
Floor: type	_____	_____	_____	Loci L18017 _____
Length 2.6	Width 0.8	Vol _____	_____	above _____
Value IS	Remove -/-/-	Drawn? _____	_____	below _____
Photo #(1) See Isra	Photo #(2) _____	_____	_____	_____
Written by: JCM	Checked by: J.R.Z	_____	_____	_____

Unit _____	Phase _____	Stage _____	Stratum _____	PoM _____
------------	-------------	-------------	---------------	-----------

Summary

Opened: CAME DOWN ON W9800 WHILE EXCAVATING L18017. MUCH OF THE NORTH FACE WAS ALREADY EXCAVATED IN 1992, SEE CARD I

Limits (N) L18051

(S) L18033

(E) BAULK

(W) BAULK UNDER DRAIN L9025

Closed: END OF SEASON AND NOT REMOVED. NOT CLOSED. Wall floating.

Matrix: SEE CARD I / 1992. The south face of W9800 is more irregular than the north face.

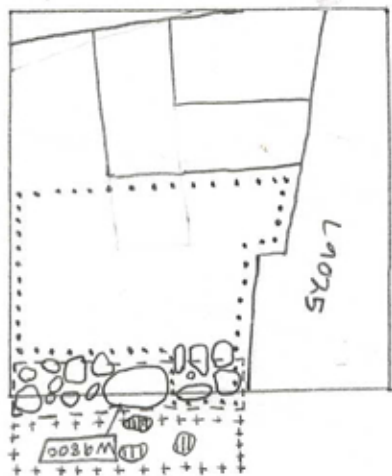
Relations: L18017 COMES DOWN ON W9800. FROM THE SOUTH L18033 REACHES THE EASTERN THREE-QUARTERS OF W9800, AND COMES DOWN ON THE THRESHOLD (12.62 W - 12.62 E) OF W9800. F18033 REACHES THE BOTTOM COURSE OF W9800 ON THE SOUTH FACE. NORTH OF W9800, L18051 ON THE NORTH. F18051 MAY REACH W9800 BUT THE RELATIONSHIP IS UNCLEAR AND UNLIKELY. Thus it is not clear if L18051 reaches or is cut by W9800. W9800 begins to float in L18070, almost immediately below F18051.

Additional Observations/Value: VALUE FOR STRATIGRAPHIC ANALYSIS IS HIGH

LOCUS

18051

Sketch plan



18051 - [grid symbol]  
 18051 - ++  
 18053 - ...  
 18057 - ---

001:1  
 N ↓



117683

F9800 should be W9800



117753

Section



Section





Locus W 9800	Dor 1977	Fld 6	Sq A I 31/32	Loc. type Store Wall
Open 24/97/97	Date	High at 12.95 E	Low at 12.51 W	Seals: 18257
Close 24/07/97		12.35 E	12.30 C	Sealed by:
Floor: type				Loci 18237
Length 3.8	Width 0.8	Vol		above
Value 1	Remove 24/97/97	Drawn? Yes		Loci 18257 18266
Photo #(1) 166628	Photo #(2) 166629			below
Written by: JCM	Checked by: JRZ			

Unit	Phase	Stage	Stratum	PoM
------	-------	-------	---------	-----

Summary

Opened: Decided to remove W9800 and excavate below

Limits (N) See '94 card  
 (S)  
 (E)  
 (W) Bulk

Closed: Removed wall. Opened L18257 and L18266 below

Matrix: See '94 card

Relations: See '94 card for older relations

Above: L18237 comes down on the western part of W9800. Evidence in the bulk\* suggests that installation L9982 may have also covered W9800. The destruction has rendered this evidence inconclusive, however.

Below: W9800 covers L18266 on the west and L18257 on the East. F18078 was also identified under this wall. W9800 also seals L18257

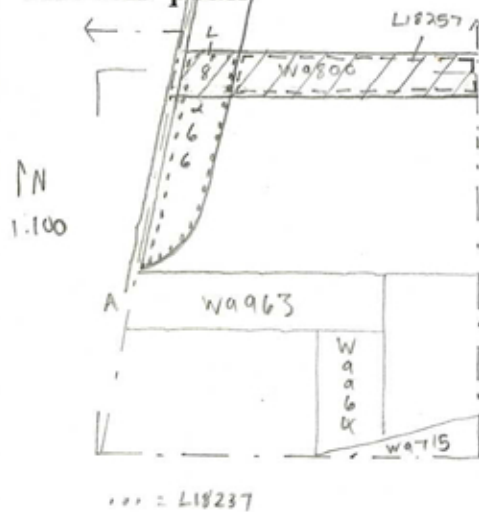
\* The evidence in the bulk is a section of a wall which may have belonged to a tall bin like installation attached to trough installation 9982 on the south

Additional Photos: 166630  
 Additional Observations/Value: High. Value.

Locus

WJ 9,8,0,0<sub>1</sub>

Sketch plan



166630



166628

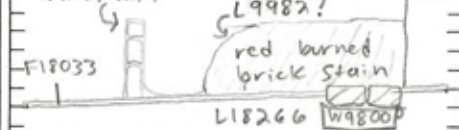


166629

Photo

Section A-B

wall of bin?



Looking west

Section

