

Locus L 9801	Dor 199.2	Fld E	Sq AI34	Loc. type	DEGRADED MUDBRICK
Open	Date 28/07/92	High at 14.87	W	Low at 14.82	E
Close	28/07/92	14.54	W	14.53	E
Floor: type					
Length	1.4	Width	0.5	Vol	
Value	u	Remove	/ /	Drawn?	NO
Photo #(1)		Photo #(2)		Locl	9777
Written by: SFB		Checked by: JRZ		above	
				below	

Unit	Phase	Stage	Stratum	PoM
------	-------	-------	---------	-----

Summary

Opened: CONTINUED DOWN IN DEGRADED MUDBRICK EXCAVATED BY RANBIR AS L9777

Limits (N) L9780 / L9789

(S)

(E) W9684

(W) L9680

Closed: NOT CLOSED. END OF SEASON ELEVATIONS 14.54(W) 14.53(E)

Matrix: MATRIX OF L9801 IS HARD, STICKY, DEGRADED MUDBRICK WITH VERY FEW INCLUSIONS. HARDER & CLEANER THAN BROWN FILL OF L9780/L9789 AND PIT MATERIAL L9680 AND SIMILAR TO MATRIX OF L TO THE SOUTH. IN ITS LOWER EASTERN

Relations: ABOVE: L9801 CONTINUES MATRIX OF L9777.

BELOW: MATRIX OF L9801 CONTINUES INTO UNEXCAVATED MATERIAL

NORTH: L9801 IS EITHER CUT OR REACHED BY L9780/L9789

WEST: L9801 IS CUT BY PERSIAN PIT L9680.

SOUTH: MATRIX OF L9801 CONTINUES INTO L

EAST: L9801 APPARENTLY REACHES W9684.

To the S, L9801 continues into the mudbrick debris locus L9694-RSS

* PART, NEAR W9684, ASHY LENSES AND SOME STONES (POSSIBLY RELATED TO RUBBLE PILE L BELOW + SOUTH) BEGIN TO APPEAR

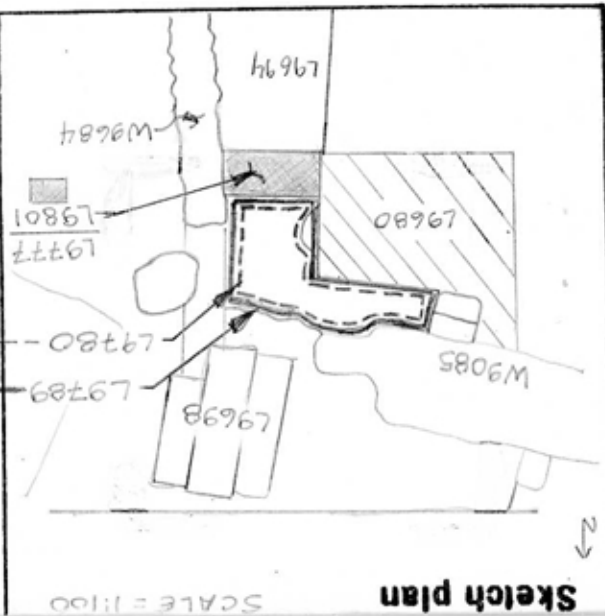
Additional Observations/Value: L9801 MAY BE DEGRADED UPPER PORTION OF MUDBRICK WALL.

Photo

Photo

Section

Section



Sketch plan

L 9801

St Lc P3
Df St Ob Ma R C P1 P2

sa sh cr 2 u ir2

sa ma bn u

sa sh cr 2 u ir2
- W9684. 1 bic.