

(cont'd)

Locus W 9804	Dor 19 9,2	Fld G ₁	Sq AI 32	Loc. type wall / balustrade
Open	Date 28/07/92	High at 1.3.4.6 S ₁	Low at 1.2.9.2 N ₁	Seals: none yet
Close	14/08/92	1.2.6.7 W ₁	1.2.5.3 E ₁	Sealed by:
Floor: type				Locl 9765 9779
Length 2.2	Width 0.2	Vol	Drawn? YFS	above
Value 4	Remove			below
Photo #(1) 86648	Photo #(2) 86645			
Written by: RAI	Checked by: JRZ			

Unit	Phase	Stage	Stratum	PoM
------	-------	-------	---------	-----

Summary

Opened: In excavating [L9765] and [L9779] came down upon cylindrical stone and stone slab wall/balustrade opened [W9804]; [W9804] not recognized as a wall until [L9765] and [L9779] had been excavated

Limits (N) Bounded by [W9704]

(S) Bounded by South bank of AI 32

(E) Bounded by [L9765] and loci below; bordered by [L9805]; and bordered by [L9812]

(W) Bounded by [L9765] and loci below

Closed: End of season — not closed

Matrix: Elliptical-shaped ^{or curved} structure, apparently of limestone, enclosing ^{burnt} mudbricks (3-4 courses thus far exposed or extant) within parallel vertical slabs, apparently, of limestone — slab preserved mainly on eastern flank of structure; structure appears to have been covered in plaster or maybe mudbrick as a finish; elliptical stone preserved only at Northern end (see drawing reverse)

Relations: [L9765] covers, but does not seal [W9804]. [L9779] covers, but does not seal the Southern end of [W9804]. [W9804] was not recognized as a wall/balustrade until [L9765] and [L9779] had been excavated. Before that, it was presumed that the elliptical/rounded stone and slab were fallen architectural debris from a nearby structure, lying in the destruction debris. Its identification as a balustrade is mere conjecture, and until [W9704] is removed, its identification is uncertain.*
To the North, [W9804] appears to underlie [W9704], but its precise relation to [W9704] cannot be determined until [W9704] has been excavated.

To the South, [W9804] continues into the South bank of AI 32.

To the East destruction debris loci [L9765], [L9779], and [L9795] reach [W9804]. [L9795] does not reach [W9804]. Installation [L9805] is bonded to [W9804], and is probably contemporary with it. [L9812] reach [W9804].

To the west, destruction debris loci [L9765] and [L9779] reach [W9804], as does the unnamed material below.

*Matrix (continued): The slab preserved on the East is conjectured to have its match on the West, enclosing mudbricks in between. To the West, however, the slab is not preserved. The elliptical stone is also not preserved to the South, but is conjectured.

Photos: 86539-86542
Additional Observations/Value: Since [W9804] seals the material below, and because it is an unusual feature, of high value

Locus Basket List

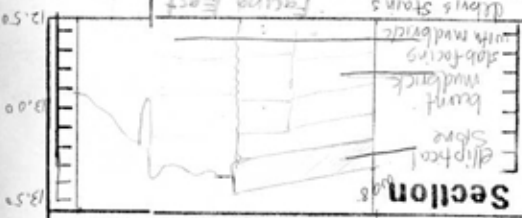
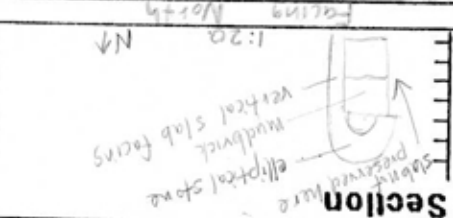
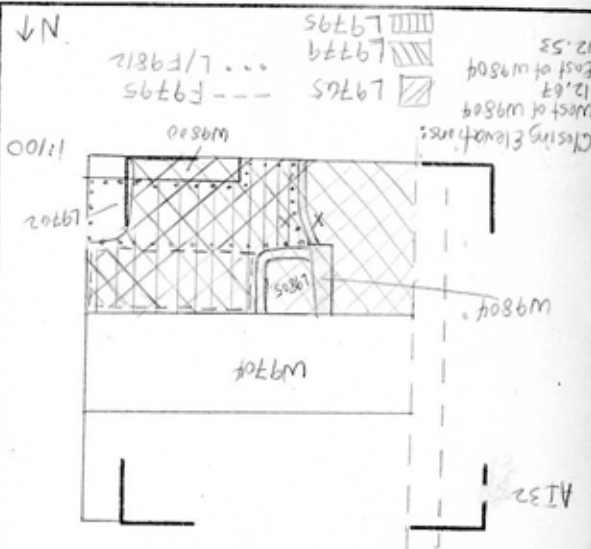
W 9804

Bask. No.	Sq.	Beg. Ele.	Clc. Ele.	St Df	Lc Ob	R Ma	C
98407	A132	12.79	12.79	wm	at pl	n	n

Comments

Plaster/mud brick (?) stable wall. Ma-stone (?)

Sketch plan



1:50