

(entered)

Locus L9816	Dor 19 <u>92</u>	Fld <u>G</u>	Sq <u>A133</u>	Loc. type <u>Rubble to wall and floor?</u>
Open <u>2/07/92</u>	High <u>14.39</u>	at <u>N</u>	Low <u>14.00</u>	at <u>S</u>
Close <u>07/08/92</u>	High <u>13.47</u>	at <u>C</u>	Low <u>13.42</u>	at <u>S</u>
Floor: type <u>cf</u>	High <u>13.47</u>	at <u>S</u>	Low <u>13.45</u>	at <u>N</u>
Length <u>3.0</u>	Width <u>1.5</u>	Vol <u>4.5</u>	Drawn? <u>NO</u>	
Value <u>U</u>	Remove <u>07/08/92</u>			
Photo #(1) <u>86697</u>	Photo #(2) <u>86700</u>			
Written by: <u>RSS</u>	Checked by: <u>JRZ</u>			

Unit	Phase	Stage	Stratum	PoM
-------------	--------------	--------------	----------------	------------

Summary

Opened: L9755 was split into L9808 and L9816 when it came down on an area of rubble fall.

Limits (N) Balk with A134

(S) L9808

(E) W9684 and L9842

(W) L9808 and L9842

Closed: Came down on W9841 and associated floor deposit to the N. - End of Season.

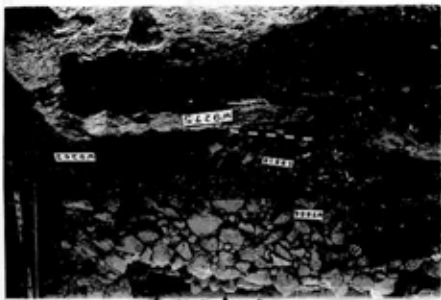
Matrix: Many fist-sized to double hand-sized cobbles and small boulders of soil was medium brown/gray dirt with many air pockets. Very loose. Very little pottery except above floors where several complete pots are crushed and a worked antler.

Relations: L9755 covers but does not seal L9816. L9808 reaches the W. and S. limit of L9816. L9816 reaches the E. face of W9684. L9816 continues N. into the balk with A134. Below the N. half of L9808, L9842 is a continuation W. of the rubble and floor deposit in L9816. The pottery from L9816 almost certainly registers with the crushed pottery also found in W9841. L9816 covers the E. half of W9841.

The floor in L9816 is at the same level as floor 9836 to the W., and probably is from the same phase. The rubble does not apparently have fallen from W9841, but rather from an E-W wall probably in the balk in A134. This wall may be an E-continuation of W921. Some of this rubble partially covered the human skeleton found in relation to W9841, but this material is dealt with separately in the W9841 card as rubble covering the wall. This was done to deal with the skeleton as a single unit rather than split between two loci. See also W9841 and L9842 cards. The skeleton lay at the same level as the floor but not on it. Floor 9816 probably reached W9684 but the end of season left it insufficiently defined. Crushed pottery in L9842, at same level as F9816, may mark level of a floor to W, though no floor material actually observed.

Additional Observations/Value: Rubble fall to floor and W9841 - High value.

Additional photos - 86583, 86584, 86585, 86586 - Also see

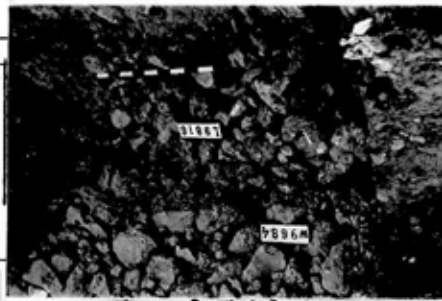


86700

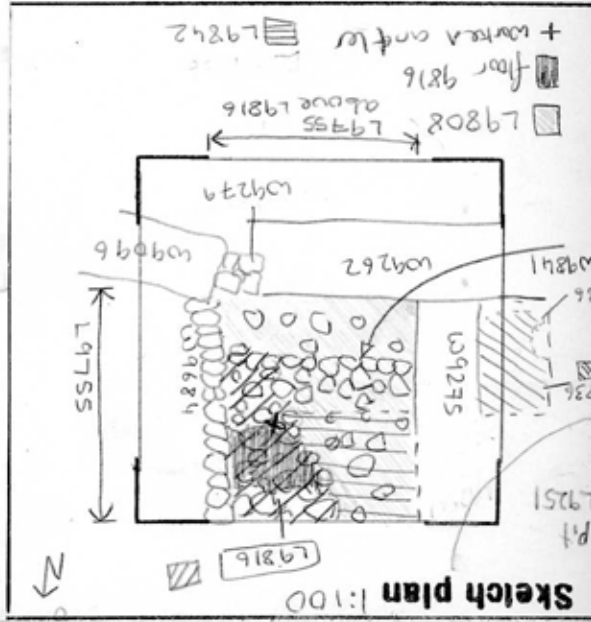
Section



86693



86303



Sketch plan 1:100

L 9816

St Lc

Df St Ob Ma R C P1 P2 P3

fs sh cr 2 d ir2a
aces.

is ma bn d

S tw st u
e.

S sh cr 3 u ir1 ir2a
nd W9841.

S ma bn u

sh cr 3 u ir1 ir2a
rubble, floor not found yet, end of
42. Do not mix.

sh cr 3 u ir1 ir2a
d W9841. Do not mix.

Locus 9816	Dor 1993	Fld G	Sq A134	Loc. type Rubble to Floor	Card 1 of 2
Open 13/07/93	High 14.50	at E	Low 13.85	at C	Seals: _____
Close 16/07/93	12.45	W	13.40	E	Sealed by: _____
Floor: type CIP	13.45	W	13.40	E	Locl 9872
Length 2.5	Width 0.8	Remove 16/07/93	Vol	Drawn? YIES	above _____
Value P	Photo #(1) 100864	Photo #(2) 100865	Locl 9919	below _____	_____
Written by: RJS	Checked by: JRZ				

Unit	Phase	Stage	Stratum	POM
------	-------	-------	---------	-----

Summary

Opened: L9872 came down on the N. continuation of L9816 in A133. L9816 was opened below L9872 in A134.

Limits (N) W9211
 (S) L9816, L9842 and L9883
 (E) W9684
 (W) W9275

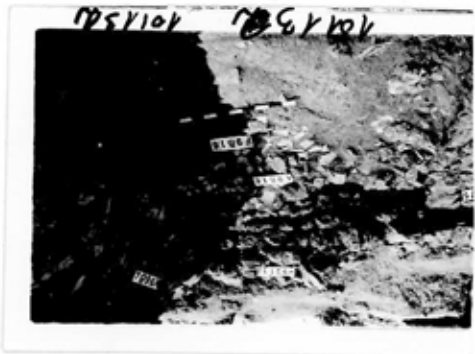
Closed: When we reached the base of the rubble fall and F9816 below.

Matrix: Mostly fist-sized to head-sized cobbles, including some large double-headed boulders. Rubble mixed in with pockets of various colored mudbrick debris, sandy medium brown loam, and ash. Large concentration of ash in E. quarter of locus. Below the main rubble fall, but above still more rubble was a very thick lens of crushed pottery.

Relations (6 buckets full). This may have fallen from a shelf or bench up against the wall. In the NE corner was an in situ grinding stone embedded in F9816. At the W. end was a complete tuckered mudbrick, which may have fallen or possibly a step up to a doorway. Along the face of W9211 and W9684 fragments of tuckered wall plaster were found. Among the many special finds were a faience gaming piece, iron incense spoon, several bone needles, pestles, and a kaurie shell necklace. Similar to L9816 to S, though more special finds. More rubble than L9872 above. or L9842 and L9883 to the S.

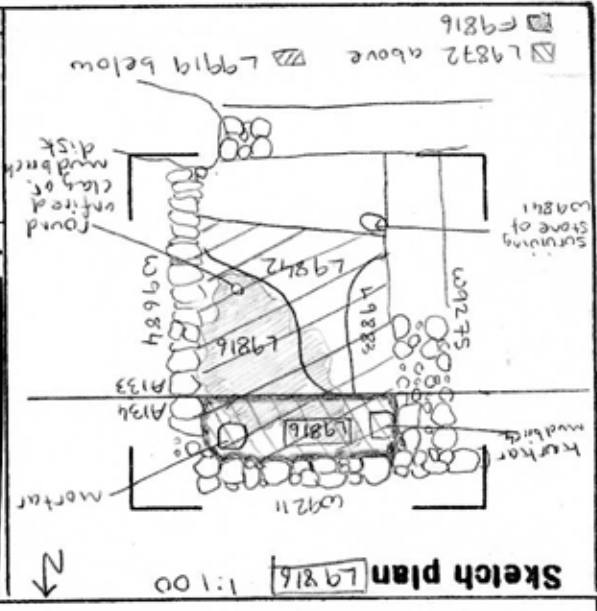
RELATIONS: L9872 covers but does not seal L9816 below. To the E. L9816 reaches the 2nd phase (from the top) of W9684. To the N. L9816 reaches the uppermost phase of W9211. To the S. L9816 continues into L9816 in A133, and also essentially continues into L9883 and L9842. L9883 and L9842 represent the same destruction though are not so rich in rubble. To the W. L9816 reaches the socle (latest phase) of W9275, though the rubble may actually have fallen into a doorway and thus covered part of W9275 (See 93 card for W9275). L9816 partially covers but does not necessarily seal L9919 below. Below L9816 covers the floor F9816 which fills the whole room of Doreen's destruction (up to W9211 to the S.) The surface onto which (See card 2 of 2)

Additional Observations/Value: N. continuation of rubble fall which killed "Doreen"; very high value.



Section

Section



Locus L9 216 Dor 19 9.3 Flid 6 Sq A 134 Loc. type Card 2 of 2 Rubble to floor entered

Open	Date	High at	Low at	Seals:	_____	_____	_____	_____
Close	_____	_____	_____	Sealed by:	_____	_____	_____	_____
Floor:	type	_____	_____	Locl	_____	_____	_____	_____
Length	Width	_____	_____	above	_____	_____	_____	_____
Value	Remove	_____	_____	below	_____	_____	_____	_____

Photo #(1) _____ Photo #(2) _____
 Written by: _____ Checked by: JRZ

Unit _____ Phase _____ Stage _____ Stratum _____ PoM _____

Summary _____

Opened: _____

Limits (N) _____

(S) _____

(E) _____

(W) _____

Closed: _____

Matrix: _____

Relations: (Continued): The rubble fall is clearly a single floor surface and should be treated as such, however, only patches of actual (ash-white) floor were found. The other areas of floor were found by excavating for the substantially harder subsurface below the rubble. This is almost definitely the "living floor" even though it lacks the ash white appearance of some of the areas of undisturbed floor.

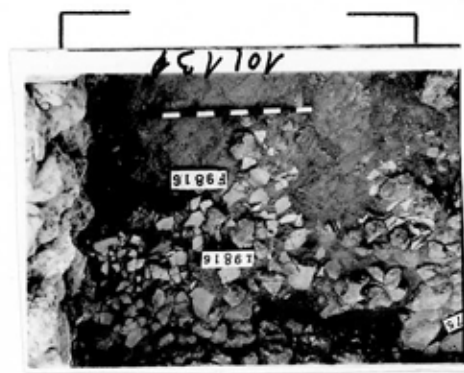
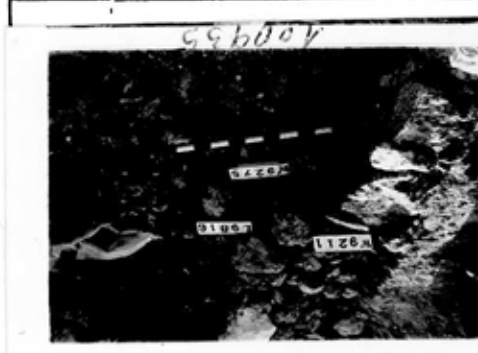
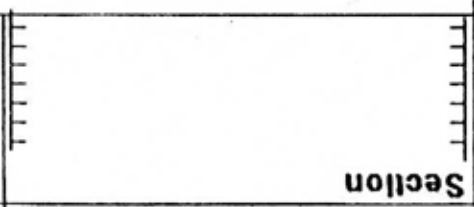
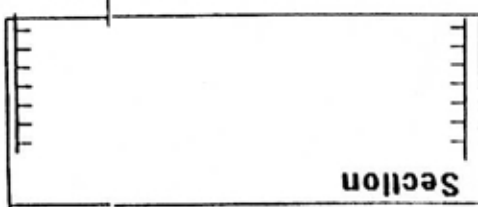
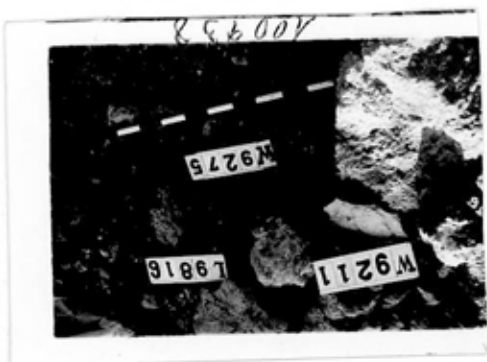
The rubble appears to have fallen from the NE corner of the locus, where W9684 meets W9211. In some areas it appeared as though W9211 had fallen almost due S. (At least one large boulder appears to have fallen like this).

F9816 reaches the groundstone mortar and appears to reach the plaster along W9684. The relationship of F9816 to W9211 and W9275 is uncertain due to the ^{patchy} nature of the floor. In one area of floor in A133 there was a small round unfired clay or mudbrick disk, approx. 8cm in dia. and 3cm thick. This was embedded into the floor.*

Additional photos of rubble fall: 100866 to 100876; and of rubble over W9275: 100934 to 100939; and of F9816: 101260 to 101265

* JRZ: since this floor is surrounded by walls on 4 sides it would be surprising if it did not originally reach them.

Additional Observations/Value: _____



Sketch plan