

Locus L 9829	Dor 1992	Fld G ₁	Sq AI32	Loc. type Possible pit, down to destruction
Open 0.4/0.8/9.2	High 13.48	at N ₁	Low 13.47	at S ₁
Close 1/0.8/9.2	High 13.30	at N ₁	Low 13.22	at S ₁
Floor: type 1	Width 1.0	Vol [diagram]	Locl 9558	
Length 1.2	Remove 0.5/0.8/9.2	Drawn? N ₀	above	
Value 4	Photo #(1) NONE	Photo #(2) NONE	Locl 9829	
Written by: RAT	Checked by: J.R.Z		below	

Unit	Phase	Stage	Stratum	PoM
------	-------	-------	---------	-----

Summary

Opened: To excavate material below L9558 (1989 season fill)

Limits (N) Bounded by L9558 and material below

(S) Bounded by the South bank of AI32

(E) Bounded by L9756

(W) Bounded by material below W9140 and W9420

Closed: Came down on destruction debris when L9826 to the North was brought to the closing level of L9820, collapsed these two loci since material identical; opened L9829 as destruction debris

Matrix: Powdery white crushed kurkar material, filled with pottery and bones; below kurkar surface material became harder, light brown mudbrick debris, again lots of pottery and bones, as well as murex shells and an iron spear point

Relations: L9558 covers, but does not seal L9820. At first, it appeared that the uniform white surface of L9558 was a floor, certain and entire. But after excavation and the pottery read, it seems more likely that L9558 had been an Iron Age pit, since the pottery coming from the first basket was very mixed and relatively late Iron age. L9820 covers but does not seal, the Southern end of L9829.

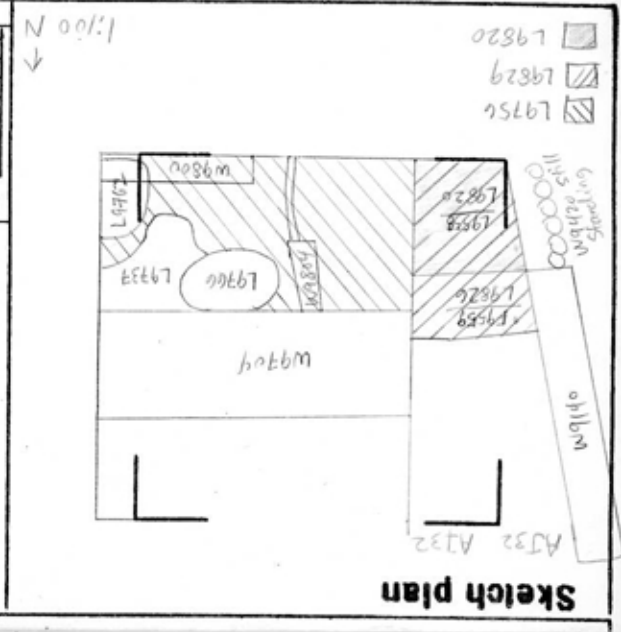
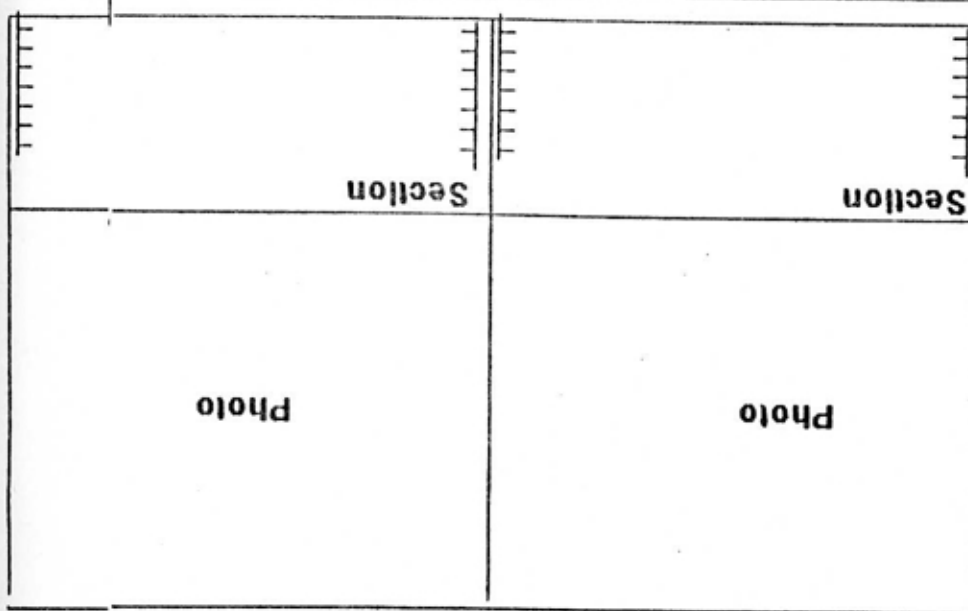
To the North, L9820 continues into L9826, and may be identical to it.

To the South, L9820 continues into the South bank of AI32.

To the East L9820 continues into L9756. Both L9820 and L9756 come down on destruction debris; but L9820 comes down to destruction at 13.30 N to 13.22 S, while L9756 comes down to destruction at 13.47 E to 13.39 W. Therefore, it seems the destruction debris slopes downwards from East to West between L9756 and L9820.

To the West, L9820 is bounded by an artificial ^{North-South} twilight zone to the East of W9140 and W9420. L9820 continues into the material below this twilight zone.

Additional Observations/Value: Due to possible contamination and since unsealed, of little to medium value.



- 9820

LC

St Ob Ma R C P1 P2 P3

tw ir s

sh cr 0 s --

sh cr 2 s ir
irs, lmp, Ir1-2b.

ma bn s

ma sl s

sh cr 2 s ir1 ir2a

sh cr 2 ?d ir1