

(entered)

Locus L 9833	Dor 1992	Fld G	Sq A134	Loc. type PIT
Open Date 03/28/92	High at 19.98 W	Low at 15.03 E	Seals: _____	Sealed by: _____
Close Date 12/08/92	14.62 C	14.62 C	Locl 9785 9695	above _____
Floor: type 1	Width 0.6	Vol	below _____	
Value 1d	Remove 1/1/1	Drawn? NO		
Photo # (1) 9716 95681	Photo # (2)			
Written by: SFB	Checked by: JRZ			

Unit	Phase	Stage	Stratum	PoM
------	-------	-------	---------	-----

Summary

Opened: WHEN PIT L9785 WAS EXCAVATED DOWN TO CLOSING LEVEL OF PREVIOUSLY EXCAVATED L9695; IT EXPANDED BENEATH THAT LOCUS & BECAME L9833

Limits (N) NORTH BULK OF SQUARE

(S) L9818 & UNEXCAVATED MATERIAL UNDER FLOOR L9754

(E) FOUNDATION PACKING OF DRAIN L9698

(W) L9798 & UNEXCAVATED MATERIAL UNDER FLOOR L9754

Closed: NOT CLOSED. END OF SEASON.

Matrix: MATRIX CONSISTS OF GRAY-BROWN MEDIUM FIRM MATERIAL WITH NUMEROUS SMALL STONES & HIGH DENSITY OF SHERDS. MATRIX SAME AS L9785 ABOVE. DISTINCT FROM BROWN MATERIAL OF NEIGHBORING L9818 & L9789.

Relations: ABOVE: L9833 CONTINUES MATRIX OF PIT L9785 (& L9751 ABOVE THAT) ALTHOUGH NOT NOTICED, MATRIX OF L9833 MUST HAVE EXISTED IN LOWER N.W. PART OF L9695; L9833 CONTINUES THIS ALSO.

BELOW: MATRIX OF L9833 CONTINUES DOWN INTO UNEXCAVATED MATERIAL.

NORTH: MATRIX OF L9833 CONTINUES INTO NORTH BULK

WEST: L9833 CUTS L9798 AND ITS FLOOR L9754; ALSO CUTS UNEXCAVATED MATERIAL BELOW THIS FLOOR.

SOUTH: L9833 CUTS L9818 AND ITS FLOOR L9754; ALSO CUTS UNEXCAVATED MATERIAL BELOW THIS FLOOR.

EAST L9833 IS CUT BY DRAIN L9698

Note: 9751 + 9785 + 9833 are all parts of the same pit

Additional Observations/Value: THIS PIT CONTAINS LATEST UNCONTAMINATED PRE-PERSIAN DEPOSIT IN THIS AREA



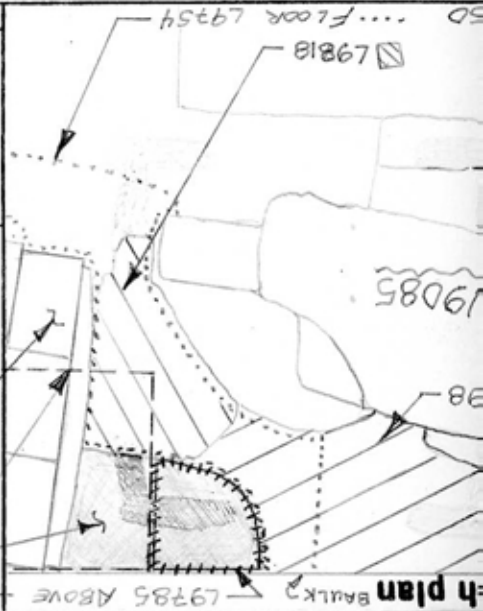
Photo

9568

Section

Photo

Section



L 9833

t Lc

f St Ob Ma R C P1 P2 P3

t sh cr 2 d ir2c
ly L9785.

t ma bn d

t sh cr 2 d ir2a ir2c

t ma bn d

t ma br d