

(417ared)

<b>LOCUS</b> L 9834	<b>Dor</b> 19 92	<b>Fld</b> G	<b>Sq</b> A 132	<b>Loc. type</b> Floormakeup, fill to floor
<b>Open</b> 10/08/92	<b>High</b> 13.62	<b>at</b> E	<b>Low</b> 13.57	<b>at</b> W
<b>Close</b> 11/08/92	<b>High</b> 13.48	<b>at</b> W	<b>Low</b> 13.44	<b>at</b> E
<b>Floor: type</b> Cf	<b>High</b> 13.48	<b>at</b> W	<b>Low</b> 13.44	<b>at</b> E
<b>Length</b> 1.5	<b>Width</b> 1.0	<b>Vol</b> [shaded]	<b>Drawn?</b> Yes	
<b>Value</b> S	<b>Remove</b> / / /			
<b>Photo # (1)</b> <del>87024</del> 87985	<b>Photo # (2)</b> <del>87020</del> 87987			
<b>Written by:</b> RAT	<b>Checked by:</b> JRZ			

<b>Unil</b>	<b>Phase</b>	<b>Stage</b>	<b>Stratum</b>	<b>PoM</b>
-------------	--------------	--------------	----------------	------------

**Summary**

**Opened:** Came down on IF98137; opened L9834 as floormakeup and fill down to floor

**Limits (N)** Bounded by material below L9787 and North bank of A132

**(S)** Bounded by W9704

**(E)** Bounded by East bank of A132

**(W)** Bounded by W9728

**Closed:** Came down on IF98341 — End of Season

**Matrix:** Floormakeup of L98141 consists of thick, white crushed kurkar surface, with flecks of charcoal throughout; fill below softer and looser than locus above, grey-brown mudbrick debris mixed with ash and lots of charcoal stains; moderate amount pottery; down to patchy white crushed kurkar floor with lots of charcoal flecks across entire locus

**Relations:** L/F98137 cover and seal L/F98341. L/F98341 cover, but do not seal, the unnamed material below, due to IF98341's fragmentary condition.

To the North, L/F98341 appear to continue into the material below L9787 and into the North bank of A132.

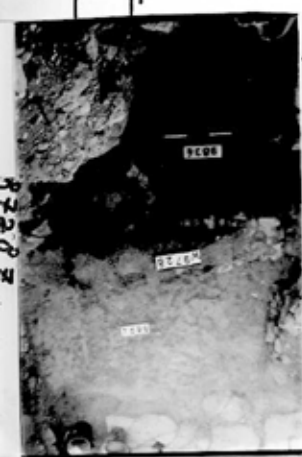
To the South, L/F98341 may underlie W9704. IF98341 is at approximately the same level as IF9703 (13.54-13.49) and IF9727 (13.56-13.39) South of W9704. In the 1991 locus cards, it was suggested that these latter two floors may underlie W9704 rather than reach H. This remains uncertain until W9704 is excavated, but seems likely.

To the East, L/F98341 appear to continue into the East bank of A132.

To the West, L/F98341 appear to reach the Sock of W9728; but because of IF98341's fragmentary nature, this is uncertain.

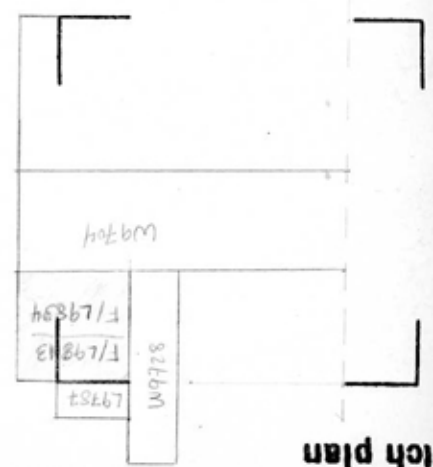
NOTE (1993) - F9834 probably continues below W9728 into F9930 or F9953 to the west - RSS

**Additional Observations/Value:** Because sealed, and coming down to a fragmentary floor, of medium value.



Section

1:100 N



etch plan

L 9834

t Lc

f St Ob Ma R C P1 P2 P3

sh cr 2 s ir1  
ipe (strange to have these 2 together).

sh cr 0 s ---