

(Continued)

Locus W 9846	Dor 19 92	Fld G ₁	Sq A734	Loc. type Wall
Open 16/08/92	High 16.23	at N.E	Low . . .	Seals: _____
Close 16/08/92	High 16.75	at E	Low . . .	Sealed by: _____
Floor: type _____	Width 0.4	Vol _____	Drawn? _____	Locl _____
Length 0.3	Remove _/ _/ _			above _____
Value _____				below _____
Photo # (1) _____	Photo # (2) _____			
Written by: J.R.Z	Checked by: J.R.Z			

Unit _____	Phase _____	Stage _____	Stratum _____	PoM _____
-------------------	--------------------	--------------------	----------------------	------------------

Summary _____

Opened: After erosion following 1991 season W9846 appeared in the N balk of A734

Limits (N) In balk with A734

(S) L9205

(E) Balk

(W) Balk

Closed: End of season - Not closed

Matrix: Two courses preserved. Top course is 2 ashlar stretchers 24 cm high, 12 cm wide and exposed to 28 cm in length. Between the two ashlars is a central packing of fist-sized stones. The bottom course is one ashlar 21 cm high and 42 cm wide, its length is unknown.

Relations: Relations above, below, west, east and north are unknown at present. To the south it may have been cut by L9205. Perhaps it is related to some phase of W9846.

Additional Observations/Value: Value uncertain until A735 excavated

Looking North



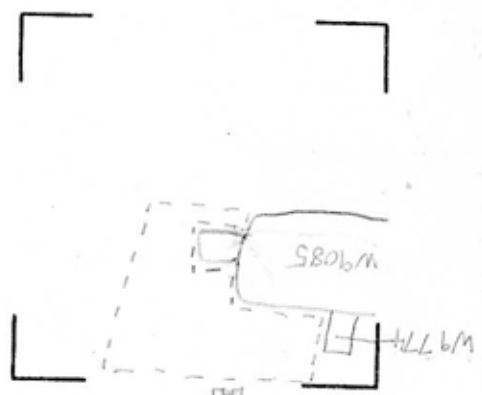
Section

Section

Photo

Photo

----- L9205



Sketch plan

W9846

W9085

W9774

