

<b>Locus</b> L 9850	<b>Dor</b> 1993	<b>Fld</b> G <sub>1</sub>	<b>Sq</b> A, I, 31	<b>Loc. type</b> Cleaning Locus + Floor Fragment
<b>Open</b> 02/07/93	<b>High</b> at 14.38	<b>Low</b> at 14.10	<b>Seals:</b> _____	
<b>Close</b> 07/07/93	<b>at</b> 14.08 S/E	<b>at</b> 14.03 N/E	<b>Sealed by:</b> _____	
<b>Floor:</b> type G <sub>0</sub>	<b>at</b> 14.04 N/W	<b>at</b> _____	<b>Locl</b> _____	
<b>Length</b> 4.1	<b>Width</b> 3.2	<b>Vol</b> _____	<b>above</b> _____	
<b>Value</b> n <sub>1</sub>	<b>Remove</b> 07/07/93	<b>Drawn?</b> Y/ES	<b>below</b> _____	
<b>Photo # (1)</b> 10100785	<b>Photo # (2)</b> 10100786		<b>Locl</b> L9874 L9877	
<b>Written by:</b> SGO	<b>Checked by:</b> JRR			

<b>Unit</b> _____	<b>Phase</b> _____	<b>Stage</b> _____	<b>Stratum</b> _____	<b>PoM</b> _____
-------------------	--------------------	--------------------	----------------------	------------------

**Summary** \_\_\_\_\_

**Opened:** Beginning of season

**Limits (N)** Bank between AI31 and AI32

**(S)** bounded by the S bank in the SW, and W9715 in the SE.

**(E)** Bank of square AI31

**(W)** Pedestal underneath L9025, a Roman drain feature.

**Closed:** The square was levelled, and it was clear from viewing the banks that the 2 years' worth of erosional wash had been removed. In addition a floor was noticed along the N bank.

**Matrix:** Loose packed earth with fist to head sized rocks, initially. L9850 ended in a layer of mudbrick debris over most of the square. The matrix in the southeastern quadrant, however, was soft + of variable color, with higher sherd density, and small bits of ash, sand, and charcoal flecks, relative to the mudbrick debris material.

**Relations:** L9850 is not related to any of the loci from 1991 (the last season that work was conducted in this square), due to its being composed of erosional wash.

Cleaning and levelling of the square, however, revealed a patch of floor (F9850), which is most likely a continuation of floor F9661, square AI32. This equation is based on a similar matrix of soft, crushed kurkar plaster, and similar elevations for the two floors. Due to the small size of F9850, it is not considered to seal the material below it. The soil and matrix differences noted at the base of L9850 were the basis for the subdivision of the square into 2 loci: L9874, which is composed of the mudbrick debris material, and L9877, which appears to be a pit which cuts through the mud brick material. This pit is clearly visible in the E bank of square AI31. L9850 covers, but does not seal, L9874 and L9877.

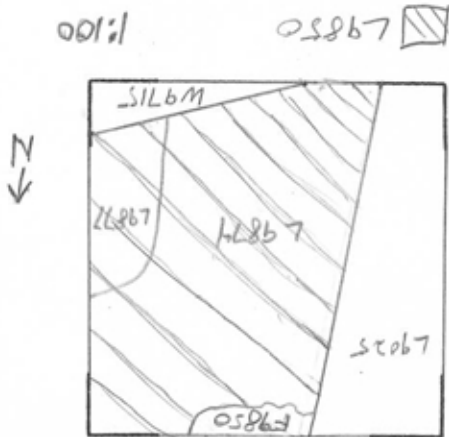
Extra Photos: 10100787, 10100788, 10100789, 10100790. Note: F9850 is labelled as F9661 in these photos.

**Additional Observations/Value:** Basket 98623 contains pottery found resting directly on F9850. Besides the floor, this locus has no value for stratigraphic analysis.



Section

Section



100785

Sketch plan