


Locus <u>L 9860</u>	Dor 19 <u>93</u>	Fld <u>G₁</u>	Sq <u>AJ33</u>	Loc. type <u>Horiz. Twilight Zone to Floor</u>
Open <u>05/07/93</u>	Date	High at <u>14.05 NW</u>	Low at <u>13.89 SW</u>	Seals: <u>9902</u> <u>9436</u> <u>9679</u>
Close <u>14/07/93</u>		<u>14.02 E</u>	<u>13.85 W</u>	Sealed by: <u>9436</u> <u>9679</u>
Floor: type <u>CE</u>		<u>14.04 E</u>	<u>13.85 C</u>	Locl <u>9436</u> <u>9346</u> <u>9679</u>
Length <u>3.8</u>	Width <u>2.8</u>	Vol 		above <u>9436</u> <u>9346</u> <u>9679</u>
Value <u>d?</u>	Remove <u>14/07/93</u>	Drawn? <u>YES</u>		below <u>9902</u> <u>9436</u> <u>9679</u>
Photo #(1) <u>101015</u>	Photo #(2) <u>101016</u>			
Written by: <u>JXS</u>	Checked by: <u>JRZ</u>			

Unit	Phase <u>G1a1/5</u>	Stage	Stratum	PoM
------	---------------------	-------	---------	-----

Summary

Opened: To provide a horizontal twilight zone across area formerly sealed by floors to account for four years of erosion.

Limits (N) Bounded by W9211 and the unexcavated material below W9510 to the North.

(S) Bounded by W9066 to the South.

(E) Bounded by W9140 to the East.

(W) Bounded by L9719 to the West (excavated '91 season).

Closed: Came down on multiple floors (Floors I+II of F9860)

Matrix: Brown mudbrick material w/ some Kurkar bits, many sherds, bone, and shell present. Both Floors I and II are of a grey ashy material with many sherds and stone tools, as well as bone and shell on them.

Relations: L9860 is covered by L9436, L9346, and E9679. Although this locus was originally sealed by F9679 and Floors II+III of L9436, four years of erosion have made this relationship doubtful, thus the twilight zone designation for this locus.

L9860 covers L9902. Floors I and II of L9860 seal the majority of L9902. The material of L9860 reaches W9211, W9140, and W9066, as well as the unexcavated material below W9510, which may be a continuation of the matrix of L9860 at this level. Floor I of L9860 reaches W9066 and W9140. Floor II reaches W9066, W9140, and W9211. L9860 may be cut by L9719, if L9719 represents some sort of robber trench in this area.

Additional Photo #s = 101017, 101018, 101019

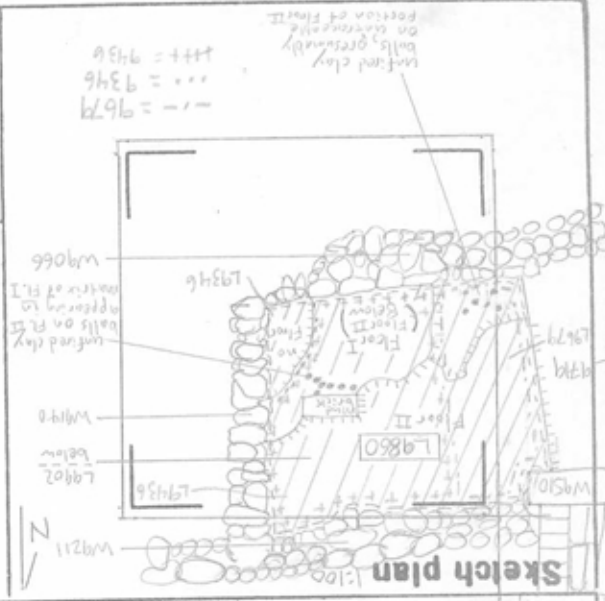
Additional Observations/Value: Iron Age fill down to floors sealed by Iron I/IIa floors. Disturbed by 4 years of erosion, but high value.

Photo

Section

Photo

Section



L 9860

clo. St Lc

Df St Ob Ma R C P1 P2 P3

3.96 tz cv cr d

.89 tz sh cr 3 d ir1

.90 tz sh cr 3 d ir1
- 2 BIC, 1 IDP

.0 tz ma bn d

tz ot sl d

tz tw st d
ble grinding palette

tz tw st d
heelbarrow