

Locus L 9896	Dor 1993	Fld G	Sq A.K. 32	Loc. type Floor makeup to Pavement (?)
Open 15/07/93	Date	High at 13.79 N	Low at 13.75 C	Seals: _____
Close 21/07/93		13.73 S	13.68 C	Sealed by: _____
Floor: type				Locl 9893 _____
Length 2.0	Width 0.7	Vol	Drawn?	above _____
Value 4	Remove			below _____
Photo #(1)		Photo #(2)		Locl 9942 _____
Written by: A.B.M.		Checked by: J.R.Z.		below _____

Unl	Phase 7?	Stage	Stratum	PoM
-----	----------	-------	---------	-----

Summary

Opened: Went below fragmentary floor [L 9893]

Limits (N) Baulk  
 (S) [L 9891]  
 (E) western limit of square A732  
 (W) [L 9894]

Closed: Came down on pavement 1994 (=L9942)

Matrix: Brown sandy material on top of flat rocks almost no pottery and bone. [L 9891] pit material: lot of pottery, bones and shells. The material of [L 9891] on that level is more or less the same, some more mudbrick material [L 9897] traces of mudbrick material, pottery, bone. F9893 was a thin, white ash/lime material.

Relations: [L 9893] covers but does not seal [L 9906], [L 9906] covers but does not seal [L 9942] and L9987.  
 To the S [L 9906] is cut by the pit [L 9891].  
 To the N [L 9906] appears to continue into the baulk.  
 To the W [L 9906] might continue into [L 9876] through the pavement (under [L 9906] continues into [L 9874] and the matrix of the 2 loci is not very different.  
 To the E the relation is not very clear [L 9173] of square A732 (cl. 13.94-13.70) is fill material of red clayey soil. [F9893] might relate to surfaces in 19380 in A732. Found between 13.80-13.33?

Additional Observations/Value: Medium value: fill down to pavement (?).

L 9906

St Lc  
Df St Ob Ma R C P1 P2 P3

sa sh cr 2 u ir1 ir2a

sa ma bn u

sa sh cr 2 u ir

sa ma bn u

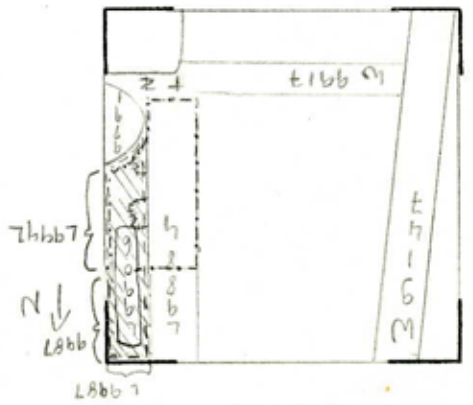
Section

Section

Photo

Photo

Sketch plan L9906



Loc above L 9893  
Loc below L 9942

F9893