

Locus <u>W 9909</u>	Dor 19 <u>93</u>	Fld <u>61</u>	Sq <u>AJ132</u>	Loc. type <u>MUD BRICK WALL</u>	Card 1 of 3
Open <u>15/07/93</u>	Date <u>15/07/93</u>	High at <u>L13.213 N</u>	Low at <u>L13.213 S</u>	Seals: <u> </u> <u> </u> <u> </u> <u> </u>	
Close <u>29/07/93</u>	Date <u>29/07/93</u>	High at <u>L13.213 N</u>	Low at <u>L13.213 S</u>	Sealed by: <u>L9869</u> <u> </u> <u> </u>	
Floor: type <u>—</u>	Width <u>1.1</u>	Remove <u>—</u>	Vol <u> </u>	Locl <u>L9869</u> <u> </u> <u> </u>	
Length <u>1.8</u>	Remove <u>—</u>	Drawn? <u>Yes</u>		above <u> </u> <u> </u> <u> </u> <u> </u>	
Photo #(1) <u>101877</u>	Photo #(2) <u>101878</u>			Locl <u> </u> <u> </u> <u> </u> <u> </u>	
Written by: <u>CUR</u>	Checked by: <u>JRZ</u>			below <u> </u> <u> </u> <u> </u> <u> </u>	

Unit	Phase <u>9+</u>	Stage	Stratum	PoM
------	-----------------	-------	---------	-----

Summary

Opened: When floor make-up and fill below L9869 was excavated to reveal mud bricks.

Limits (N) L9907
(S) L9947
(E) Unexcavated material below W9140
(W) L9908

Closed: at end of season - Not closed.

Matrix: Mud/kurkar pebble brick with the following dimensions:
 8 cm high, 37 cm wide; 50 cm long. At least 3 courses are visible on the N face and probably 5 on the S face.

Relations: [W9909] is covered by L9869. L9869 is the floor make-up and fill below of F9493/F9951/F9913/F9851 thus seal [W9909]. The base of [W9909] has not been reached so its relations below

To the N: L9907 reaches [W9909]. No floor associated with [W9909] was found in L9907, suggesting that [W9909] is here superstructure. W9915 seems to abut [W9909]
To the E: [W9909] abuts W9915
To the S: L9947 reaches [W9909]. No floor associated with [W9909] was found in L9947, suggesting that [W9909] is here superstructure. L9967 reaches [W9909] for the same reason.
To the W: [W9909] is probably cut by pit L9996 which was only defined in L9908 after L9908 was excavated down ca. 40 cm. It is likely that lower courses of [W9909] will be found lower down beneath L9908 and to connect with W9998 and make a corner running N. W9998 is only preserved in the W bulk part of 1 course high and 2 bricks wide; a small part of W9998 is visible at the bottom of L9908. The non-pit material of L9908 reaches [W9909]

* Additional Photos: 101879-101890
Additional Observations/Value: [W9909] is sealed below an extensive floor and is very important side of 9143

Sketch plan for L9909

N
1



••• = L9909

/// = L9967 below 9947



Locus W 9909	Dor 197	Fld G	Sq A533	Loc. type (card 2) Mudbrick wall with stone socle
Open Date 16/47/17	High at 13.23 S	Low at 13.31 N	Seals: _____	Sealed by: _____
Close Date 08/08/97	12.26 SE	12.09 SW	Loci above _____	below _____
Floor: type _____	Length 3.0	Width 0.5	Vol _____	Drawn? Yes
Value 1.5	Remove _____	Drawn? Yes	Photo #(1) 166729	Photo #(2) 166728
Written by: JCM	Checked by: J.R.Z	Unit _____	Phase _____	Stage _____
Summary		Stratum _____	PoM _____	

Summary

Opened: See previous card. at top of stone wall.

Limits (N) L18239, L18306, L18231

(S) L18242, L18293

(E) W9915

(W) L18230, L18249

Closed: Not closed. end of season. Does not appear to be floating yet.

Matrix: Mudbrick wall (see previous card) on stone socle. 5-6 courses of 10-30 cm diameter fieldstones make up the socle.

The stone socle begins at 12.89 (east) / 12.56 (west) m.

Relations: see previous card for older relations

North: L18239 & L18231 reaches [W9909], F18239 also reaches the stone socle of [W9909]. L18306 reaches [W9909].

South: L18242 reaches [W9909], F18242-F18293 reaches the stone socle of [W9909]. L18293 reaches [W9909].

East: The mudbrick superstructure of W9915 is built on stone socle from W9909 & dove tails into [W9909], but W9909 may continue east as W18229. **

West: L18230, L18249, reach W9909. F18249 = F18247 reaches [W9909].

as they are on the same line, though of radically different construction techniques.

* 110 m distance W9909

Additional Photos: 166724, 166727

Additional Observations/Value: High Value.



167160



167639



166959



167336



167644

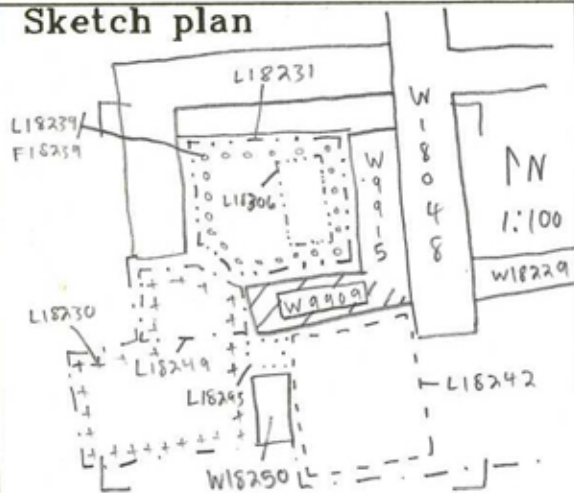


167641

Locus

W 9909

Sketch plan



166729

Section



16689DA



166727



166724

Locus W 9909	Dor 1998	Fld G	Sq AJ32	Loc. type Mudbrick wall with stone socle
Open Date 2.3/07/98	High at 13.04 E	Low at 12.97 W	Seals: _____	
Close Date 07/08/98	High at 12.00 W	Low at 11.99 E	Sealed by: _____	
Floor: type L.8	Width 0.5	Vol _____	Loci above _____	see previous cards
Value i	Remove _/_/_	Drawn? YES	Loci below _____	
Photo #(1) 175633	Photo #(2) 175634			
Written by: HAK	Checked by: JRZ			

Unit	Phase	Stage	Stratum	PoM
------	-------	-------	---------	-----

Summary

Opened: to remove mudbricks above stone socle.

Limits (N) See previous cards

(S) L18344, L18354, W18250

(E) See previous cards

(W) See previous cards

Closed: not closed - end of season

Matrix: Socle composed of small to medium sized field stones (10-20 cm in diameter) Six courses preserved in the east, two courses preserved in the west. At west end of wall, where a doorway should be, the lowest visible course is a single stone 85-95 cm wide

Relations:

W18250 (a lower course uncovered below F18293) abuts W9909 from the south.

L18344 reaches W9909 from the south. F18344 was not observed reaching W9909

although presumably it did because F18344 reaches W18250 and W18250

abuts W9909. L18354 reaches W9909 from the south. F18354 was not observed

reaching W9909 although F18354 does reach W18250. In the corner where W9909 abuts/is abutted by W18248 it looks like one of the surfaces of F18354 slopes up to reach W9909, or at least tries very hard to do so. The area is very small however and difficult to examine

Additional photos #175635-637

Additional Observations/Value: high value

184991



184992



184569



184573



184491

184570



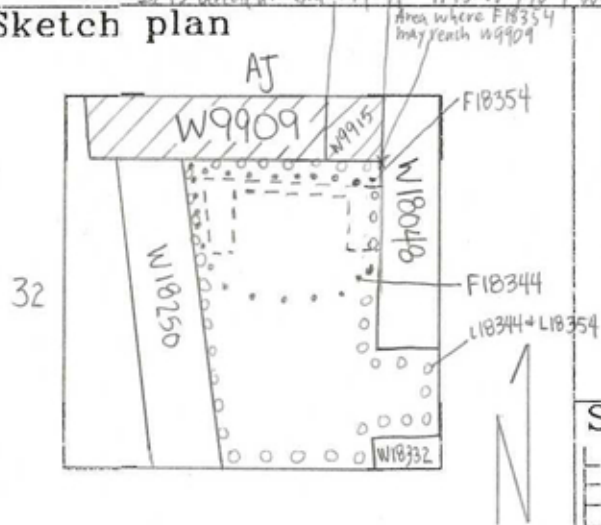
184720



Locus
W 9909

It is unclear exactly if it is W9909 which extends up to W18048, or if W9915 blocks 9909. In any case 9909+9915 are contemporary.

Sketch plan



Photo



Locus WJ 9909	Dor 1999	Fld G ₁	Sq A732	Loc. type WALL (CONTINUATION CARD)
Open Date 04/08/99	High at 12.85 C ₁	Low at 12.15 W ₁	Seals: 18421	Sealed by:
Close Date 05/08/99	11.86 C ₁	11.41 E ₁	Loci above	
Floor: type	Width 0.5	Vol	Loci below	
Length 1.8	Remove 05/08/99	Drawn? YES		
Value W ₁				
Photo #(1)	Photo #(2)	Loci above		
Written by: KN	Checked by: JRZ	Loci below		
Unit	Phase	Stage	Stratum	PoM
Summary				
Opened: W9909 WAS FLOATING AND REMOVED				
Limits (N) 118370 / 118375 / 118390 / 118398 / 118409 AND 118393 / 118400				
(S) 118367 / 118376 AND 118372 / 118394 / 118412				
(E) W9915 / W18229				
(W) L18372 / L18413				
Closed: W9909 WAS REMOVED				
Matrix: 5-6 COURSES OF SMALL HEADSIZE FIELDSTONES. ONE BIG (± SQUARE) STONE IN THE WEST FORMS A DOORWAY WITH W9998. AT THE JUNCTION WITH W9915 AND W18229 ONE EXTRA COURSE INTO THE SOIL WAS VISIBLE. THE LOWEST COURSE OF W9909 WAS BUILT ON TOP OF RED SOIL AND RED MUDBRICK WAS LINING THE SIDES OF THE LOWEST COURSE				
Relations: ABOVE: SEE PREVIOUS CARDS				
NORTH: THE FILLS OF L18370, L18390, L18398 AND L18409 REACH W9909 BUT NONE OF THEIR FLOORS COULD BE SEEN REACHING THE WALL. L18393 AND L18400 ARE PART OF A PIT CUTTING THE OTHER LOC? AND THEIR FILLS REACH THE WALL.*				
SOUTH: L18367 REACHES W9909 WHICH WAS DEFINITELY FLOATING IN L18376. L18372 REACHES W9909 BUT NOT THE FLOOR. F18412 IS CUT BY THE SOIL BELOW THE LOWEST COURSE OF W9909 SINCE L18412 IS THE MAKEUP OF F18394, THE LATTER MUST BE CUT BY THE WALL AS WELL. W9909 IS FLOATING IN L18412				
EAST: W9909 DOVE TAILS INTO STAGE B AND C OF W9915 AND INTO STAGE B OF W18229				
WEST: W9909 CUTS THE FILL OF L18372. THE MUDBRICK OF L18413 REACHES PART OF THE STONE IN THE DOORWAY BUT MOSTLY RUNS UNDERNEATH W9909. IT MUST THEREFORE HAVE BEEN ADDED TO THE FOUNDATION TRENCH OF W9909 OR IN A VERY EARLY STAGE OF THE USE OF THE WALL				
BELOW: COVERS AND SEALS L18421				
* All the above listed floors could have reached W9909 as they are above its lowest point; even F18409 could have sloped up to reach it				
Additional Observations/Value: HIGH VALUE				

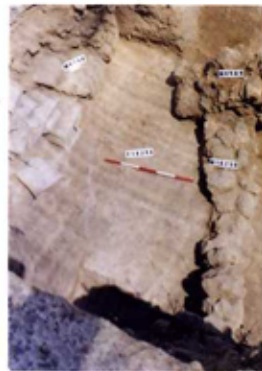
185268



185265



185264



185263



185262



185105

Locus

W 9909

Sketch plan



186799 185145



186800



185146

186798



185144

186796



185142