

Locus L 9912	Dor 19 9,3	Fld G ₁	Sq A ₁ B ₁ C ₁	Loc. type Mudbrick Debris Fill		
Open 15/07/93	Date	High 13.75	at N ₁	Low 13.75	at S ₁	Seals: _____
Close 28/07/93		High 13.42	at N ₁	Low 13.40	at S ₁	Sealed by: _____
Floor: type _____		Width _____		Vol _____		Locl L 9,89,4 L 9,8,7,7
Length 3.6		Remove _____		Drawn? _____		above _____
Value d ₁						below _____
Photo #(1) _____		Photo #(2) _____				Locl L 9,9,66
Written by: S, G ₀		Checked by: J, R, Z				_____

Unit	Phase	Stage	Stratum	PoM
------	-------	-------	---------	-----

Summary

Opened: When the bottom of pit L9877 was reached, and a layer of mudbrick debris was noticed.

Limits (N) Bank between A131 and A132

(S) L9913

(E) Bank of A131.

(W) L9911, L9934, L9956, and L9933, running from N to S.

Closed: Several architectural features (esp W9963, W9964, and W9952) were encountered, necessitating a redefinition of loci across the square. W9963 may continue from E-W across the base of L9912.

Matrix: Mudbrick debris, with some small (fist size) stones, fragments of toppled mudbricks, some charcoal, some pottery. Differentiated from L9933 and L9913, which consist of pure mudbrick material; and L9911 and L9934, which are more variegated and contain higher shard + charcoal density.

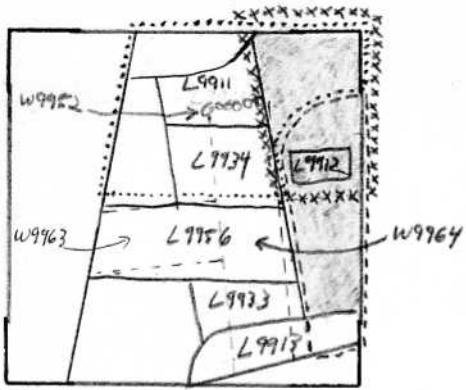
Relations: To the N, L9912 is a continuation of L9894^{above}, a mudbrick debris locus. To the S, L9912 is covered, and possibly disturbed by, L9877, the large pit feature. To the W, L9912 reaches L9911, L9934, L9956, and L9933. When the bases of these loci were reached, it became clear that a mudbrick wall, W9964, formed a boundary between L9912 and the fills of loci to the W. To the S, L9912 and the E of L9913 (ie. to the E of the line of W9964) share the same matrix.

To the N, L9912 covers, but does not seal, L9966, a continuation of the mudbrick debris of L9912. No loci were opened beneath the S half of L9912 before the end of the '93 field season.

Note: at the base of L9912 in the S, an area of in situ mudbricks was noticed that did not follow the orientations of W9963 and W9964 (located beneath L9956, and L9913, L9933, L9934 respectively). The relationship between the initial indications of this "mudbrick pavement" and W9963 and W9964 could not be determined by the end of the '93 field season.

Additional Observations/Value: L9912 may be disturbed in its upper limit by L9877, a large pit which cuts the loci above. If the area of in situ mudbricks resolves into a feature, the base of this locus will have a high value for stratigraphic analysis.

Sketch plan



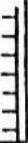
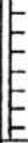
□ L9894 above □ L9966 Below
□ L9877 above

Photo

Photo

Section

Section



Locus Basket List

L 9912

Bask. No.	Sq.	Reg. Ele.	Clo. Ele.	St Df	Lc St	Ob	Ma	R	C	P1	P2	P3
99106	AI31 Pottery	13.77	13.68	fb		sh cr		0	u	ir1	ir2a	
99107	AI31 Bone	13.77	13.68	fb		ma bn			u			
99128	AI31 Shells	13.77	13.68	fb		ma sl			u			
99129	AI31 Iron piece	13.77	13.68	fb		ma ir			u			
99147	AI31 Pottery	13.73	13.54 1 SGL kernos	fb		sh cr		1	u	mixed		
99148	AI31 bone	13.73	13.54	fb		ma bn			u			
99163	AI31 Flint blade	13.73	13.54	fb		tw st			u			
99214	AI31 pottery	13.61	13.50	fb		sh cr		0	u	--		
99215	AI31 Bone.	13.61	13.50	fb		ma bn			u			
99270	AI31 metal slag	13.61	13.50	fb		ot mt			u			
99500	AI31 metal slag bag	13.50	13.40	fb		ma mt			u			
99502	AI31 bone	13.50	13.40	fb		ma bn			u			
99503	AI31 pottery	13.50	13.40	fb		sh cr		2	u	ir1	ir2a	
99546	AI31 Pottery	13.53	13.41	fb		sh cr		2	u	ir1	ir2a	
99547	AI31 Slag	13.53	13.41	fb		ma mt			u			
99588	AI31 bone	13.53	13.41	fb		ma bn			u			