

Locus <u>W 9915</u>	Dor 19 <u>2,3</u>	Fld <u>G1</u>	Sq <u>AJ33</u>	Loc. type <u>MUD BRICK WALL BELOW FLOOR</u>		
Open <u>1.6/07/93</u>	Date	High <u>1.3.35</u>	at <u>S1</u>	Low <u>1.3.31</u>	at <u>N1</u>	Seals: <u> </u> <u> </u> <u> </u> <u> </u>
Close <u>3.1/07/93</u>		<u>12.89</u>	<u>M</u>	<u>12.86</u>	<u>S1</u>	Sealed by: <u>L9869</u> <u>9140</u> <u> </u>
Floor: type <u>1</u>	Width <u>1.1</u>	Vol <u> </u>	Drawn? <u>YES</u>	Locl <u>L9869</u> <u>9140</u> <u> </u> <u> </u>	above <u> </u> <u> </u> <u> </u> <u> </u>	
Photo #(1) <u>101879</u>	Photo #(2) <u>101880</u>	Locl <u> </u> <u> </u> <u> </u> <u> </u>	below <u> </u> <u> </u> <u> </u> <u> </u>			
Written by: <u>CUR</u>	Checked by: <u>JRZ</u>					

Unit	Phase	Stage	Stratum	PoM
------	-------	-------	---------	-----

Summary

Opened: when fill material of floor L9869 exposed bricks of W9915

Limits (N) Pit L9921
 (S) W9909
 (E) Wall 9140
 (W) L9907

Closed: End of Season - Not closed.

Matrix: Mud bricks 37 cm wide x 60 cm long x 9 cm high laid in header fashion. 6 courses so far revealed.

Relations: W9915 is covered by L9869, floor made up of F9943/F9851; F9943/F9851/W9915 effectively seals W9915, W9140 covers and seals the E edge of W9915.

To the N: Pit L9921 cuts W9915.

To the E: W9140 is built on top of W9915's east edge.

To the S: L9947 and L9967 reach W9915 because no floor reaching W9915 has been found in those loci, suggesting that

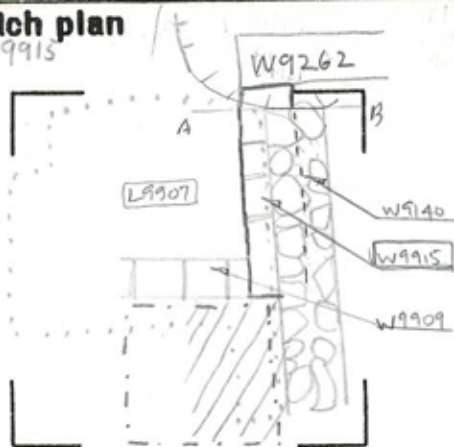
To the W: Fill L9907 likely reaches W9915, W9909 abuts W9915. W9915 is superstructure here.

W9915 continues N, at the bottom of pit 19921 into AJ33 where it abuts W9262. W9140 likewise abuts W9262. From the N, W9140 is a single large stone wide; its width perfectly matches the width of the bricks in W9915. W9140 is essentially a later continuation of W9915 but offset slightly to the E and 2 stones wide. The foundation trench of W9140 cuts the top preserved course of W9915.

101879-101880 are additional photos

Additional Observations/Value: High value: Sealed by a floor and a wall.

Sketch plan
of W9915



101879



101880

Section Facing S



Section



Locus W 9915	Dor 19 ₁₇	Fld G ₁	Sq AJ32	Loc. type Mudbrick wall + Stone Sockle
Open	Date 16/17/17	High at 13.35	Low at 13.31	Seals: _____
Close	08/08/17	12.12	12.99	Sealed by: _____
Floor: type	Width 1.5	Remove	Vol	Loci _____
Value 15			Drawn? Yes	above _____
Photo #(1) See Isrg	Photo #(2)			Loci _____
Written by: JCM	Checked by: JRZ			below _____

Unit	Phase	Stage	Stratum	PoM
------	-------	-------	---------	-----

Summary _____

Opened: See previous Card

Limits (N) See previous Card

(S) _____
 (E) _____
 (W) L18231, L18239, L18306

Closed: Not closed. Uncertain yet if W9915 is not yet floating

Matrix: See previous Card. 10 courses of Mudbrick and roughly 4 courses of 7-20 cm diameter fieldstones in the socle. The stone socle of this wall begins at 12.48 (Norm) / 12.95 (center)

Relations: Above: See previous Card

North: See previous Card

South: The mudbrick superstructure of W9915 dovetails into both the mudbrick and stone socle of W9909

East: W9915 is adjacent to W18048; can not yet say for sure which is earlier, though W9915 is deeper than W18048

West: L18231, L18239 and F18239 all reach W9915. W9915 probably cut L18306, but this relationship is not yet clear.

Below: Possible F18306 appears to extend under W9915.

F18239 slopes up very dramatically from west to east to reach W9915

* the north end of 18048

Additional Observations/Value: High Value.



167645



167643

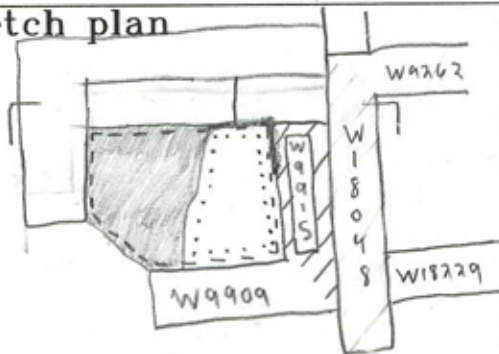


167635

LOCUS

W 9915

Sketch plan



N
1:100

- - L18239
- /// - F18239
- ... - L18306



167334



166730



166848



166849

Locus WJ 9915	Dor 19 ₉₉	Fld G ₁	Sq A _{1, 1, 3, 2, 1, 3, 3, 1}	Loc. type STAGE A (WALL CONTINUATION CARD)		
Open <u>06/07/99</u>	Date	High <u>1.3-3.5</u>	at <u>S₁</u>	Low <u>1.3-3.2</u>	at <u>N₁</u>	Seals: <u> </u> <u> </u> <u> </u> <u> </u>
Close <u>07/07/99</u>		High <u>1.2-5.4</u>	at <u>C₁</u>	Low <u>1.2-4.9</u>	at <u>S₁</u>	Sealed by: <u> </u> <u> </u> <u> </u> <u> </u>
Floor: type <u>1</u>		Width <u>0.9</u>		Vol <u> </u>		Loci <u> </u> <u> </u> <u> </u> <u> </u>
Length <u>1.7</u>		Remove <u>07/07/99</u>		Drawn? <u>YES</u>		above <u> </u> <u> </u> <u> </u> <u> </u>
Value <u>41</u>						below <u> </u> <u> </u> <u> </u> <u> </u>
Photo #(1) <u>184488</u>		Photo #(2) <u>184489</u>				Loci <u> </u> <u> </u> <u> </u> <u> </u>
Written by: <u>KV</u>		Checked by: <u>JRZ</u>				below <u> </u> <u> </u> <u> </u> <u> </u>

Unit _____	Phase _____	Stage _____	Stratum _____	PoM _____
-------------------	--------------------	--------------------	----------------------	------------------

Summary

Opened: WE DECIDED TO REMOVE THE MUDBRICK STAGE OF [W9915] (= STAGE A)

Limits (N)

(S) _____
 (E) _____
 (W) L18393

SEE PREVIOUS CARDS

Closed: ALL MUDBRICK WAS REMOVED AND WE CAME DOWN ON STAGE B OF [W9915]

Matrix: STAGE A: YELLOW-BROWN MUDBRICKS WITH A HIGH PERCENTAGE OF KURKAR INCLUSIONS (GRAVEL SIZE)
 THE HORIZONTAL CREVICES BETWEEN THE BRICKS WERE FILLED WITH GREY "MORTAR" ON TOP OF WHICH REED MATTING IS VISIBLE. FEW POTTERY INCLUSIONS. WE CAME DOWN ON THE TOP OF STAGE B OF [W9915] WHICH EXTENDS ANOTHER 40 CMS UNDER W18048 TO THE EAST

Relations: ABOVE: SEE PREVIOUS CARDS

NORTH: STAGE A (MUDBRICK) LEANS AGAINST W9940 WHICH IS NOW KALUN TO BE BUILT ON TOP OF THE NORTHERN EXTENSION OF [W9915] (→ STAGES B & C) (SEE CARD 2)

SOUTH: STAGE A OF [W9915] IS BUILT AGAINST THE UPPER STONES OF W9909 AND GOES WITH THE PIER OF W18229 AND THEREFORE W18229 (STAGE A) IS SIMILAR TO [W9915] (STAGE A)

EAST: W18048 IS MERELY A FACADE OF ONE TO TWO STONES THICK (DOUBLE PIST SIZE) BUILT AGAINST STAGE A OF [W9915] AND ONLY STARTING AT THE TOP LEVEL OF STAGE B OF [W9915]. IT BECAME CLEAR FROM THE REMOVAL OF STAGE A OF [W9915] THAT W18048 COULD NOT STAND ON ITS OWN

WEST: STAGE A IS "FLOATING" ^{well above} 18393

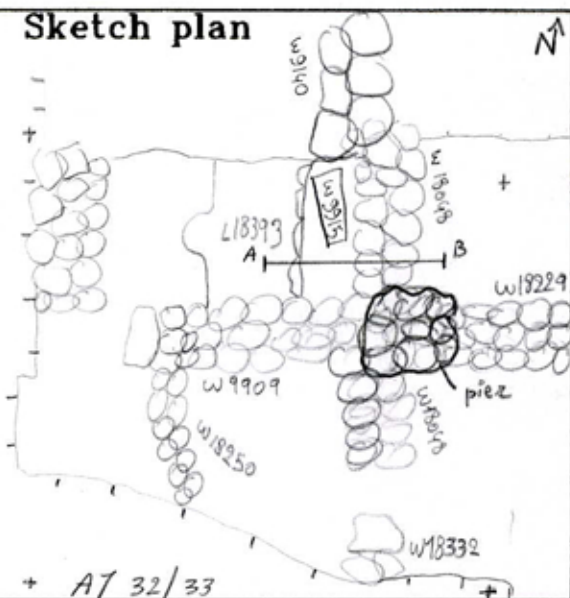
BELOW: STAGE A SEALS STAGE B OF [W9915]

* THIS PIER (PART OF STAGE A OF W18229) IS ALSO PART OF W18048 MAKING THE CONNECTION BETWEEN THE SOUTHERN AND NORTHERN PART OF W18048. THIS PIER WOULD THEREFORE HAVE BEEN IN USE IN PHASE 10 AND IN 9 WHILE THE REST OF THE WALL IS PHASE 10, BELOW THE FLOOR OF THE DESTRUCTION DEPOSIT IN PHASE 9

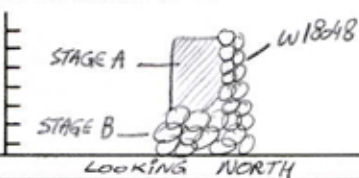
Additional Observations/Value: HIGH VALUE: IMPORTANT PHASE 10 WALL

Locus
W 9975

Sketch plan



Section A-B



Section



Locus W 9915	Dor 19 ₁₉	Fld G _L	Sq A ₁ , 3 ₂ , 3 ₃	Loc. type STAGE B & C (WALL CONTINUATION CARD)
Open 07/17/19	High at 12.54	at C ₁	Low at 12.49	at S ₁
Close 06/08/19	11.52	at S ₁	11.43	at N ₁
Floor: type	Width	Vol	Drawn?	YES
Length 1.7	0.8			
Value S _L	Remove 06/08/19			
Photo #(1)	Photo #(2)	Loci 18403		
Written by: KVL	Checked by: JRZ	below		

Unit _____ Phase _____ Stage _____ Stratum _____ PoM _____

Summary

Opened: STAGE A WAS REMOVED AND STAGES B AND C WERE ALSO FLOATING

Limits (N) W 9211

(S) W 9909 / W 18229

(E) L 18384

(W) L 18393 / L 18400

Closed: THE STONE STAGES OF W 9915 (B & C) WERE REMOVED.

Matrix: THERE ARE TWO STONE STAGES: STAGE B IS AN ESTHETICALLY APPEALING STAGE MADE OUT OF WELL-LAP FIRST SIZE STONES (4-5 COURSES HIGH). THE STAGE IS ALSO 4 STONES THICK. THE WESTERN AND EASTERN OUTER ONES FORM A FILL INTO WHICH RUBBLE WAS FILLED. STAGE C IS BUILT OUT OF A-2 COURSES OF DOUBLEHEAD SIZE STONES SUPPORTED BY SOME SMALLER STONES. THIS STAGE CLEARLY CONTIGUES INTO STAGE B OF W 18229

Relations: AND ALSO DIPS DOWN IN THE SOUTH UNDERNEATH THE JUNCTION OF W 9909 AND W 18229 AND W 9915. STAGE C: top: 12.00-11.92 base: 11.73-11.51 STAGE B: top: 12.62-12.37 base: 12.00-11.92

ABOVE: STAGE A SEALS STAGE B

NORTH: THE STONE STAGES OF W 9915 CONTIGUE AS THE LOWER STAGES OF W 9140 ALL THE WAY ALONG TO W 9211. THE LOWER PART OF W 9140 IN A 7 33 WILL NOW BE DISCUSSED AS W 9915

SOUTH: STAGES B AND C DOVETAIL INTO W 9909. STAGE B OF W 9915 GOES WITH STAGE A OF W 18229 WHILE STAGE C IS A CLEAR CONTINUATION OF STAGE B OF W 18229

EAST: L 18384 REACHES BOTH STONE STAGES OF W 9915. SEE CARD 2 OF L 18384 FOR A DETAILED DISCUSSION OF THE RELATIONS OF THE FLOORS IN L 18384 WITH W 9915. FLOOR 4 CLEARLY REACHES STAGE B (12.67-12.60) AND FLOOR 5 REACHES STAGE C (11.57-11.43)

F 18403 CONTIGUES UNDERNEATH W 9915 TO THE WEST, YET, THE FLOOR IS DAMAGED BY THE WEIGHT OF THE STONES ON TOP OF IT.

WEST: L 18393 REACHES W 9915. W 9915 WAS CERTAINLY FLOATING IN L 18400 WHERE SOME STONES ARE PLACED AGAINST W 9915.

BELOW: F 18403 CONTIGUES BELOW BOTH W 9915 AND L 18400 WHICH IS A PIT. THE FOUNDATION TRENCH OF W 9915 IS LINED AT ITS BASE ON BOTH EAST AND WEST SIDE BY LARGE AMOUNTS OF SHELLS

Additional Observations/Value: HIGH VALUE: IMPORTANT PHASE TO WALL