

Locus L 9929	Dor 19 93	Fld G1	Sq A633	Loc. type PIT TO FLOOR
Open 20/09/93	Date	High at 14.83 E1	Low at 14.77 W1	Seals: NIA
Close 22/09/93		14.77 E1	14.74 W1	Sealed by: NIA
Floor: type C1P		14.77 E1	14.77 W1	Locl 9,899
Length 1.0m	Width 0.8m	Vol [REDACTED]	Drawn? No	above
Value d1	Remove / / /			below
Photo #(1) NIA	Photo #(2) NIA			
Written by: G.S.C.	Checked by: J.A.Z.			

Unit	Phase	Stage	Stratum	PoM
-------------	--------------	--------------	----------------	------------

Summary

Opened: WHEN L9890 CAME DOWN UPON A HEAVY POTTERY LENS, L9890 SPLIT INTO PIT L9929 AND THE REST BECAME PART OF L9932.

Limits (N) L9932 (d)
(S) L9932 (b)
(E) L9932 (b)
(W) L9883 + L9932 (c)

Closed: CAME DOWN UPON A SMALL FLOOR PATCH THAT IS A CONTINUATION OF GENERAL F9932.

Matrix: MODERATELY PACKED, SANDY GREY MATRIX W/ A HIGH CONCENTRATION OF POTTERY SHEARDS AND SOME BONE. L9890 ABOVE WAS OF THE SAME MATRIX BUT HAD VISIBLY LESS POTTERY INCLUSIONS. L9932 CONSISTS OF A UNIFORM REDDISH-BROWN SOIL WITH CHARCOAL FLECKS, MUD-BRICK DEBRIS AND SMALL SHEARDS AND BONE. [F9929] IS A SMALL, .25m x .25m, PATCH OF THIN CRUSHED KURKAR.

Relations: L9890 IS PROBABLY CONTAMINATED WITH SOME UPPER PIT [L9929]. STILL, MOST OF L9890 COVERS, BUT DOES NOT SEAL, PIT L9929. *

[L9929] IS SURROUNDED BY L9932 BECAUSE ALL MATERIAL AROUND IT WAS FOUND TO BE SIMILAR AND ALL L9932 WAS COMING DOWN OF FLOORS. [L9929] EVENTUALLY BOTTOMED OUT TO REVEAL A SMALL CONTINUATION OF F9932 (technically, "F9929").

[L9929] TO THE SAND IS BOUNDED BY L9932 "b" SO DESIGNATED TO ISOLATE THE MATERIAL WITHIN THIS AREA IN CASE THERE WAS STILL PIT MATERIAL. TO THE NORTH, L9932 "d" SIMPLY DESIGNATES A TRENCH CUT IN ORDER TO TRACE F9932, WHEREAS THE REST OF [L9929]'S BOUNDARY IS L9932 (c). PIT [L9929] CUTS FILL L9932 (b) (c) AND (d). ALSO, [L9929] COVERS, BUT DOES NOT SEAL, A SECTION OF F9932.

"F9929" IS A SMALL PATCH OF CRUSHED KURKAR WHICH CONNECTS FLOOR MATERIAL ORIGINATING FROM F9901 IN THE SE AND AT A HIGHER LEVEL, RUNNING DIAGONALLY TOWARDS THE NW INTO L9932 (b), THROUGH TO PIT [L9929], THEN NORTHWARD INTO L9932 (b) AND (d). (F9932 REMAINS TO BE FURTHER EXCAVATED.) [F9929] THEREFORE IS A CONTINUATION OF F9932 (b) AND (d) TO THE N, E AND S, AND ENDS IN A NON-CONTINUOUS AND PATCHY OUTLINE TO THE WEST.

* The pit part of L9890 was difficult to trace and define; its upper part may well have covered most of 9890 since it seems to cut F9901. It was only when it was redefined as [L9929] that its limits were clear and well-defined.

Additional Observations/Value: LOW VALUE. PIT YIELDED PR / Gem IR / IR2 AND ITS TWILIGHT ZONE. IR1 / IR2a / MB.

Locus Basket List

L 9929

Bask. No.	Sq.	Beg. Ele.	Clo. Ele.	St Df	Lc St	Lc Ob	Ma R	C C	P1
99349	AG33	14.88	14.77	pt	sh	cr	0	d	pr
99350	AG33	14.88	14.77	pt	ma	bn		d	
99352	AG33	14.88	14.77	pt	ma	sl		d	
99353	AG33	14.88	14.77	pt	tw	cr		d	
99366	AG33	14.83	14.53	pt	sh	cr	0	d	ir
99367	AG33	14.83	14.53	pt	ma	bn		d	
99514	AG33	14.90	14.80	tz	sh	cr	2	d	ir-1
99515	AG33	14.90	14.80	tz	ma	bn		d	

pottery

bone

murex shell

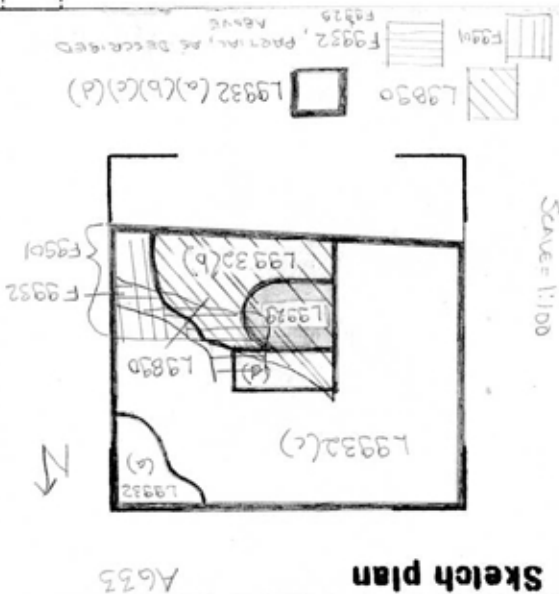
ceramic slingstone

pottery

bone

pottery- tz- mb

Sketch plan



Section

Photo

Section

Photo