

Locus L 9934	Dor 1993	Fld G	Sq A, B, C, D, E, F, G, H, I, J, K, L, M, N, O, P, Q, R, S, T, U, V, W, X, Y, Z	Loc. type Fill						
Open	Date	High	at	Low	at	Seals:	_____	_____	_____	_____
Close	21/07/93	13.68	E ₁	13.66	W ₁	Sealed by:	L9895	_____	_____	_____
Floor:	type	_____	_____	_____	_____	Locl	L9895	_____	_____	_____
Length	0.8	Width	1.2	Vol	_____	above	_____	_____	_____	_____
Value	S ₁	Remove	1/1/1	Drawn?	_____	Locl	W9964	L9965	_____	_____
Photo #(1)	_____	Photo #(2)	_____	Locl	_____	below	_____	_____	_____	_____
Written by:	S.G.P.	Checked by:	J.R.B.	Locl	_____	below	_____	_____	_____	_____

Unit	Phase	Stage	Stratum	PoM
------	-------	-------	---------	-----

Summary

Opened: When it became clear that the base of L9895, the stone rubble deposit, had been reached

Limits (N) L9911
 (S) L9956
 (E) L9912
 (W) L9945

Closed: When the base of a mudbrick wall was encountered in the E, and the top of a complete vessel was found to the W. The wall was given W9964.

Matrix: Initially, this locus was characterized by the last remnants of the stone rubble deposit of L9895. Then, a matrix similar to adjacent loci: To the W, variegated soil, with charcoal, yellow sandy lenses, rust stains, and a high density of potsherds + animal bones (i.e. a continuation of L9945). To the E, an area of pure mudbrick debris w/ no shards or other inclusions (continuation of L9956).

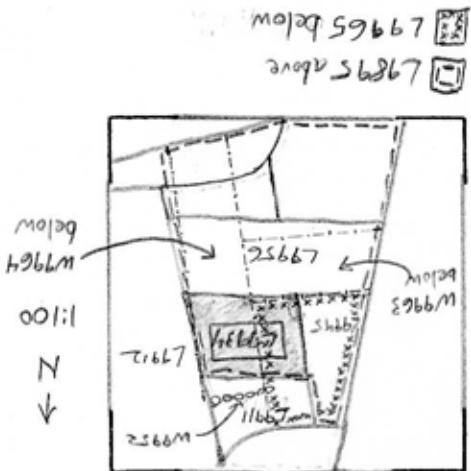
Relations: L9934 is covered, and considered to be at least partially sealed by, L9895. To the W, L9945 is a continuation of the variegated matrix encountered in the W of L9934. To the S, L9934 reaches L9956, an area of pure mudbrick debris. Indeed, the SE region of L9934 is a continuation of the matrix of L9956. To the E, L9912 reaches the pure mudbrick debris found in the E of L9934. To the N, L9911 is a continuation of L9934. To the E, L9934 covers W9964. To the W, L9934 covers, but does not seal, L9965. However, L9965 is still considered to be sealed by L9895, the stone rubble deposit.

Additional Observations/Value: A complete bowl was found at the base of L9934 in the SW corner. It was removed with L9965, below. Finds from L9934 should be linked, but not mixed with, L9911, L9945, and L9965. These four loci contain a primary and possibly in situ deposit which is bounded by W9963 and W9964.

Locus Basket List

Bask. No.	Sq. Comments	Beg. Ele.	Cl. Ele.	St Df	Lc	Ma	R	C	P1
L 9934									
99417	A131	13.68	13.44	is					
	(R) pottery- possible								
99418	A131	13.68	13.44	is	sh cr	3	p	ir	
	bone								
99419	A131	13.68	13.44	is	ma bn				p
	iron fragment								
99433	A131	13.68	13.44	is	tw mt				p
	burnt seed								
99436	A131	13.68	13.44	is	ma vg				p
	slingstone								
99456	A131	13.49	13.36	is					
	(R) pottery- (R) with L9911, L9945				sh cr	3	p	ir1	ir2
99457	A131	13.49	13.36	is					
	bone								
99479	A131	13.49	13.36	is	tw bn				p

Sketch plan L9934



Section

Photo

Section

Photo