

Locus L 9943	Dor 19 9.3	Flid G	Sq A, K, 3, 2	Loc. type Rubble on top of wall
Open Date 2/27/93	High at 13.69 N	Low at 13.68 S	Seals: _____	
Close Date 2/27/93	13.43 N	13.30 S	Sealed by: _____	
Floor: type L-2	Width 0.4	Vol	Locl 9867	
Value 4	Remove	Drawn? YES	above	
Photo #(1) 101712	Photo #(2) 101713	Locl 9959	9917	
Written by: A.R.M.	Checked by: J.R.2	below		

Unit	Phase	Stage	Stratum	PoM
------	-------	-------	---------	-----

Summary

Opened: Came down on stones that looked like they may be part of a wall

Limits (N) Bounded on the N by [W 9917]  
 (S) Bounded on the S by the baulk  
 (E) Bounded on the E by the baulk  
 (W) Bounded on the W by [L 9916]

Closed: Came down on stones that looked like a different structure which became W 9959

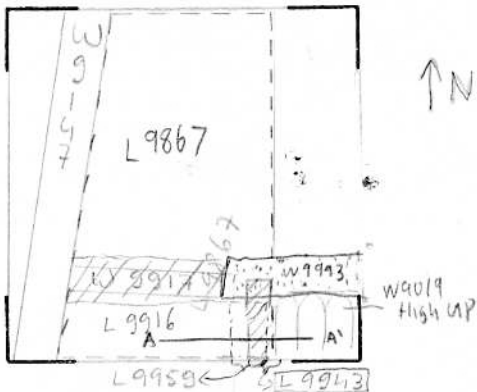
Matrix: Stones (± 2/10s) sloping down from the E baulk. Stones from [W 9959] bigger sticking further out than [L 9943] and for many from [L 9867] red-brown sandy material and mudbrick material.

Relations: [L 9867] covers, but does not seal [L 9943], [L 9943] seals [L 9959].  
 To the E the [L 9943] might continue into the baulk, but this relation is uncertain.  
 To the W [L 9916] reaches [L 9943], because [L 9943] was partially covered by [L 9916]. [L 9943]'s rubble sloping down from E-W, 9916 seems to be debris poured or fallen next to it.  
 To the N [L 994] might partly cover [W 9917]. It looks like [L 9943] is rubble that slid down on [W 9917] and [W 9959], but these relations are still uncertain. Further excavation is needed.\*  
 To the S [L 9943] appears to continue into the baulk.  
 \* [L 9943], after further study, does seem to cover rubble line/wall 9917, and possibly also the stone section of [W 9993].

Additional Photo's: 101714 - 101716

Additional Observations/Value: Not clearly definable architectural features

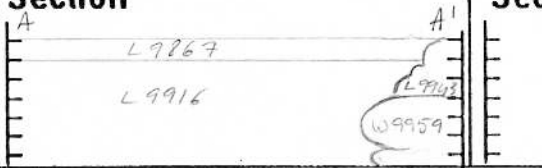
# Sketch plan



low above --- L 9867  
 low below --- L 9959  
 . . . = stone W 9993    /// = mudbrick W 9993

# Photo

# Section



Viewed from the South