

Locus L 9945	Dor 19 9.3	Fld G ₁	Sq A 53.1	Loc. type Mudbrick Debris Fill
Open 2.6/07/93	Date	High at 13.69 N ₁	Low at 13.50 E ₁	Seals: _____
Close 2.9/07/93		13.40 S ₁	13.37 N ₁	Sealed by: L9895 _____
Floor: type 1	Width 0.8	Remove 1/1/1	Vol _____	Locl L9895 _____
Length 1.8			Drawn? _____	above _____
Value S ₁				Locl L9965 _____
Photo #(1) 101620	Photo #(2) 101621			below _____
Written by: SIGAO	Checked by: JRZ			

Unit	Phase	Stage	Stratum	PoM
------	-------	-------	---------	-----

Summary

Opened: When an area of fill was noticed at the base of L9895

Limits (N) L 9910

(S) L9956

(E) L9934 to the S, and L9911 to the N.

(W) Pedestal underneath L9025, the Roman drain feature.

Closed: When it became clear that the fill of L9945 was bounded on the S and E by mudbrick walls.

Matrix: Initially, the remnants of the stone rubble of L8895, then mudbrick debris, with variegated soil - color is more grey than matrix of L9956 and the Eof L 9934, with rust stains, lots of animal bones, charcoal density relatively high, and several restorable vessels, probably in primary context.

Relations: L9945 is covered, and considered to be sealed by, L9895. To the N, L9945 reaches, and also covers the continuation of, L9910. To the E, L9911 and L9934 are continuations in the W of the matrix of L9945. To the S, L9945 reaches L9956 an area of pure mudbrick debris. L9945 covers, but does not seal, L9965, which is a continuation of L9945 above. However, L9965 is considered to be sealed by L9895, the stone rubble deposit.

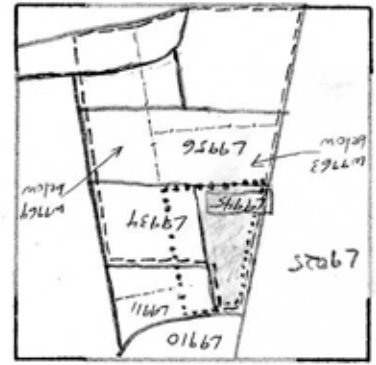
Extra notes: The bronze object (B# 99586) removed from this locus is probably associated with L9965, at the base of L9965 below.

INTERPRETATION: L9945 appears to be the beginnings of the fill of a Room eventually bounded by L9963 and L9964.

Additional Photos: 101622-101624 - all photos are of bronze object (99586 = Basket #)

Additional Observations/Value: Numerous small finds and restorable vessels were encountered as this locus was removed. The value of this locus for stratigraphic analysis is fairly high, since these finds appear to be in primary context. Finds from this locus and L9965, L9911, and L9934 should be linked, but not mixed.

Sketch plan L9945



L9925 above
 L9975 below

13.40 is tw st p
 13.50 is ot st p
 13.40 is sh cr 3 p ir1 ir2a
 th L9934, L9911-1 LMP
 13.40 is ma bn p
 13.50 is tw st p
 13.49 is tw ir p
 13.40 is tw st p
 13.41 is sh cr 3 p ir2a
 with L9934, L9911
 13.45 is tw st p

Section

Photo

Section

Photo