

Locus WJ 9964	Dor 1993	Fld G	Sq AE31	Loc. type Mudbrick Wall
Open Date 29/07/93	High at 13.45 S	Low at 13.38 N	Seals:	_____
Close Date 04/08/93	13.40 S	13.16 NW	Sealed by:	_____
Floor: type -	Width 0.8	Vol	Locl	L9911 L9934 L9956 L9933
Length 3.6	Remove	Drawn? No	above	L9913 9952 _____
Photo #(1) see Isrg	Photo #(2)	Locl	below	_____
Written by: SGP	Checked by: JRZ	below	_____	_____

Unit	Phase	Stage	Stratum	PoM
------	-------	-------	---------	-----

Summary

Opened: When the top of W9964 was encountered at the base of several loci: L9933, L9934, L9956, and L9913.

Limits (N) Limit defined as intersection with L9910 above, and L9991 below.

(S) W9715

(E) L9966 to the NE, unnumbered and unexcavated material to the SE.

(W) L9965 and L9984 below to the NW, W9963 at center, and L9979 to the SW.

Closed: End of season, not closed

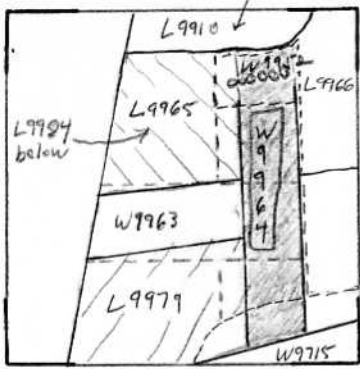
Matrix: Mudbricks of varying shades and sizes. Some reddish "tracer" bricks, others are rusty colored, and some are brown or grey. Sizes of the mudbricks vary and are laid irregularly. It appears as though standard bricks, approximately 45x35cm, were cut to varying sizes to construct each course. 2, and possibly 3 courses, are visible in the NE. To the NW, a few stones were noticed 1cm below the top of the chartraces of W9964.

Relations: W9964 is covered, but not sealed by, several loci, running N to S: L9911, L9934, L9956, L9933, and L9913. To the N, the relation between W9964, L9910 and L9991 is unclear. To the E, L9966 reaches W9964. To the S, W9964 abuts W9715, since W9715 continues below the base of L9979. To the W, L9979 reaches W9964 in the SW, W9963 abuts W9964 in the center, and L9965 reaches W9964 in the NW. F9965 reaches W9964; however, the relation between F9979 and W9964 could not be determined by the end of the season. The relation between W9952 and W9964 was also undetermined at the end of the '93 season. Unexcavated material S of L9966 may reach W9964. Note: No actual floor material of F9965 was observed to reach W9964. Several vessels in L9965 seemed to "lean" against W9963 and their bases were at the same level as the observed traces of F9965. Since W9963 abuts W9964, F9965 should reach the latter along with the former. F9979 was at roughly the same level as F9965; it too may have reached W9964.

Matrix, cont. - There stones may continue underneath W9964. If this is the case, the foundations of W9964 may lie just below the closing elevation of L9984.

Additional Observations/Value: Value for stratigraphic analysis is high

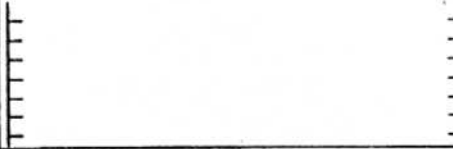
sketch plan



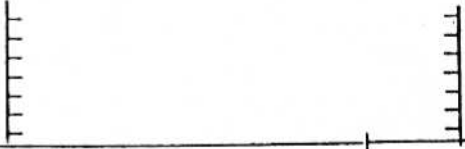
Loc. Above, from N to S: L9911, L9974,
L9956, L9933, L9913.



Section



Section



Locus W 9964	Dor 1994	Fld 6	Sq A131	Loc. type MUDBRICK WALL CARD II
Open Date 04/27/94	High at 13.39 N	Low at 13.39 S	Seals: 4,18,033	
Close 03/08/94	13.11 SW	12.90 NW	Sealed by:	
Floor: type	Length 3.6	Width 9.8	Vol	Loci
Value I	Remove	Drawn? YES		above
Photo #(1) See Isra	Photo #(2)			Loci 4,18,033
Written by: JGM	Checked by: JRZ			below

Unit	Phase	Stage	Stratum	PoM
------	-------	-------	---------	-----

Summary

Opened: SEE CARD I, 1991

Limits (N) W9952, L18007

(S) W9715

(E) L18002, L9966, L18018

(W) L18003, L18024, L18016

Closed: NOT CLOSED

Matrix: SEE CARD I, 1991

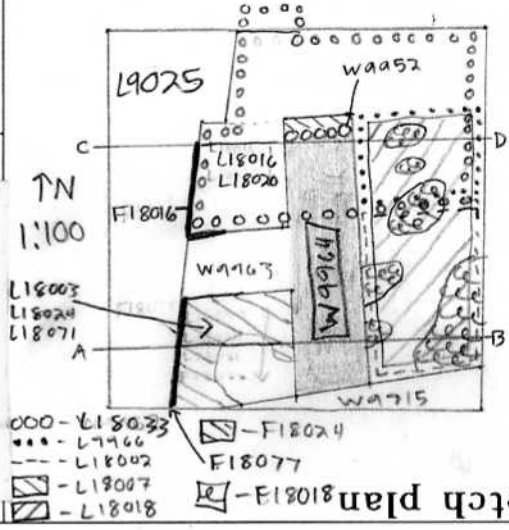
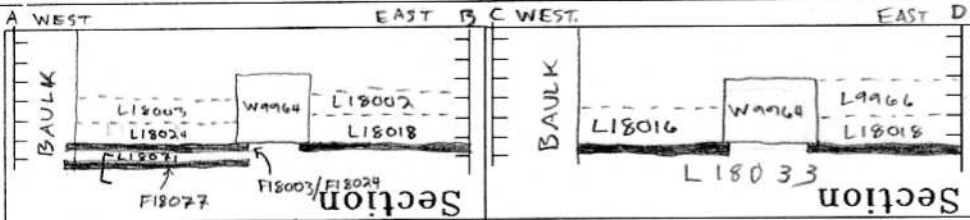
Relations: L18002 AND L9966 ABOVE AND L18018 BELOW WHICH ARE ALL PART OF THE SAME DEPOSIT UNIT REACH THE EAST FACE OF W9964. W9952 ^{abuts W9964 as a partial facing} ON THE NORTH.

L18007 REACHES W9964 BELOW W9952. NORTH OF W9963 L18016 REACHES THE WEST FACE OF W9964. W9963 ABUTS THE WEST FACE OF W9964. SOUTH OF W9963 L18003 AND L18024 BELOW BOTH REACH W9964. W9964 ABUTS THE STONE PHASE OF W9715 TO THE SOUTH.

NOTE - A COMPLEX OF FLOORS INCLUDING F18003/F18024, F18016, AND F18018 EXISTS UPON WHICH W9964 AND W9963 WERE BUILT. F18003/F18024, F18018, AND W9964 RELATE ONLY TO THE STONE PHASE OF W9715. BELOW F18003/F18024 IS F18077 WHICH REACHES THE BOTTOM OF THE EARLIER MUDBRICK PHASE OF W9715. F18077 AND MUDBRICK W9715 THUS REPRESENT THE FIRST POST DESTRUCTION PHASE OF CONSTRUCTION. W9964 AND W9963 REPRESENT A THIRD PHASE OF CONSTRUCTION, ERECTED AFTER STONE W9715 AND THE COMPLEX OF FLOORS WAS BUILT.

NOTE - THE PART OF W9964 WHICH EXTENDS BEYOND W9963 NORTHWARDS WAS REMOVED TO PROVIDE A BETTER EXPOSURE IN THE NORTHERN HALF OF THE SQUARE

Additional Observations/Value: VALUE FOR STRATIGRAPHIC ANALYSIS IS HIGH



etch plan 18018
ocus



Locus W 9964	Dor 1997	Fld G	Sq A331	Loc. type Mudbrick Wall Card III
Open 23/47/97	Date	High at 13.22 S	Low at 13.21 W	Seals: 18260
Close 24/07/97		13.02 S	12.93 N	Sealed by:
Floor: type		Length 1.5	Width 9.8	Vol
Value	Remove 24/07/97	Drawn? Yes		Loci above
Photo #(1)	Photo #(2)			Loci below
Written by: JCM	Checked by: J.R.Z.			

Unit _____ Phase _____ Stage _____ Stratum _____ PoM _____

Summary _____

Opened: Decided to excavate southern half of A331 and below W9964

Limits (N) See card from '94.

(S)

(E)

(W)

Closed: Cleared wall and opened L18260

Matrix: See '94 card

Relations: See '94 card

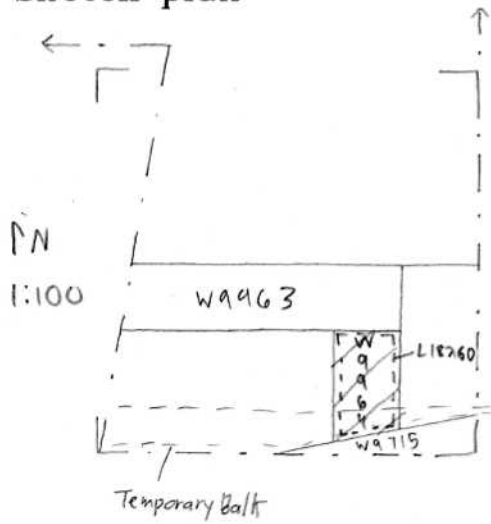
W9964 seals L18260 below.

A temporary bulk, including the south most part of W9964, to help support W9715 in S. bulk

Additional Observations/Value: High Value

Locus
W 9964

Sketch plan



Photo

Photo

Section

Section