

Locus 9970	Dor 19 93	Fld 6	Sq A, 1, 3, 2	Loc. type mudbrick Wall pedestal						
Open 29/07/93	Date	High 1.3.21 W	at	Low 1.3.13 E	at	Seals:	_____	_____	_____	_____
Close 29/07/93		12.6.9 W		12.6.8 E		Sealed by:	9917	_____	_____	_____
Floor: type		_____		_____		Locl above	9917	_____	_____	_____
Length 0.6	Width 0.4			Vol		below	_____	_____	_____	_____
Value 5	Remove 29/07/93			Drawn?		Locl below	9993	_____	_____	_____
Photo # (1)		Photo # (2)								
Written by: AIRM		Checked by: JRZ								

Unit	Phase	?	Stage	Stratum	PoM
------	-------	---	-------	---------	-----

**Summary**

Opened: Came down on mudbrick wall (bricks clearly defined)

Limits (N) [L 9925]

(S) [L 9916]

(E) [W 9993]

(W) Excavated material under [W 9917]

Closed: Came down on mudbrick wall (bricks clearly defined)

Matrix: Thick mudbrick material, but no traces of fugelines. Sealed by [W 9917], lead size fieldstones. [L 9916] and [L 9935] consist of red-brown with some traces of mudbrick (especially in [L 9916]). [W 9959] consists of lead size fieldstones with a second row of smaller stones underneath. [L 9993] below [9990] mudbrick wall

Relations: [L 9970] is sealed by [W 9917] \* [with clearly defined fugelines]

To the N [L 9970] is reached by the fill material of [L 9935]

To the S [L 9970] is reached by the fill material of [L 9916]

To the W [L 9970] might continue into the bank

To the E [L 9970] might reach [W 9993]. [L 9970] might be mudbricks that collapsed on top of [W 9993] (mudbrick wall below) and the stone wall [W 9993] to the E.

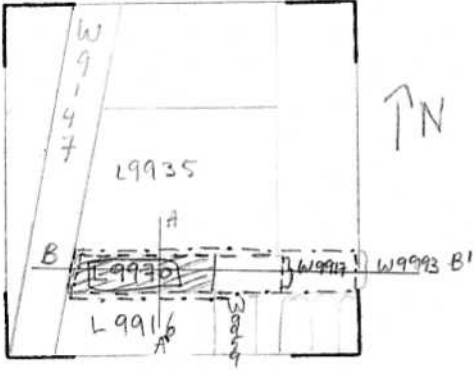
\* [L 9917] seals the mudbrick part of [W 9993]

Comment: [W 9993] is below [L 9970] as well as to the E of it [L 9993] is a stone wall with a mudbrick wall attached to it

[L 9970] is the debris below 9917 (possibly a rubble wall). Since 9917 reached or covered the W end of the stone section of W 9993, [L 9970] (possibly ruined upper mudbrick courses) of W: mudbrick section of W 9993) may also have reached W 9993.

Additional Observations/Value: Mudbrick pedestal sealed under [W 9917]

**Sketch plan**

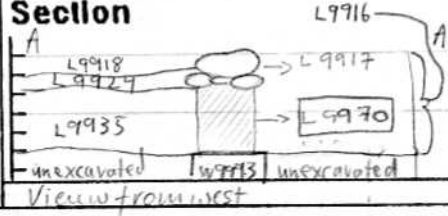


Locs above ---- : W 9917  
 Locs below ---- : W 9993

**Photo**

**Photo**

**Section**



**Section**

