

W 9975

10. St Lc

1e. Df St Ob Ma R C P1 P2 P3

1.63 cl tw st d
(?)

Photo

Section

Photo

Section



Sketch plan

| | | | | |
|------------------------|----------------------|--------------------------------|-------------------------------|----------------------------|
| Locus W 9975 | Dor 19 ₉₄ | Fld G ₁ | Sq A1331 | Loc. type Wall (card 2) |
| Open | Date 0.5/0.7/1.4 | High at 1.4-0.8 S ₁ | Low at 1.3-0.4 N ₁ | Seals: _____ |
| Close | 0.5/0.8/1.4 | 1.3-0.8 S ₁ | 1.3-0.3 N ₁ | Sealed by: _____ |
| Floor: type | | | | Loci _____ |
| Length | 1.1 | Width 0.4 | Vol _____ | above _____ |
| Value | d ₁ ? | Remove | Drawn? No | below _____ |
| Photo #(1) | | Photo #(2) | | Loci _____ |
| Written by: JRIZ | | Checked by: JRIZ | | below _____ |

| | | | | |
|------------|-------------|-------------|---------------|-----------|
| Unit _____ | Phase _____ | Stage _____ | Stratum _____ | PoM _____ |
|------------|-------------|-------------|---------------|-----------|

Summary _____

Opened: See Previous Card

Limits (N) See Previous Card
 (S) See Previous Card
 (E) 18015, 18062? 18063, 18079
 (W) See Previous Card

Closed: Not yet floating, not removed; end of season

Matrix: See previous card. 3-4 courses of fist to head size field stones.

Relations: For all relations above, N, S, and west See previous card. Only new relations in 194 are to East.

On the East [18015] reaches [W9975]; [E18015] also reaches [W9975]. [18062] may reach [W9975] but this is at the point where [W9975] disappears into the debris below W9963 and/or [W9147] to test. [18063] reaches [W9975] and [E18063] also reaches [W9975]. [18079] apparently reaches [W9975] though [18079] was closed because of end of season so it is uncertain if [W9975] would have begun to float in [18079] if excavation had continued there.

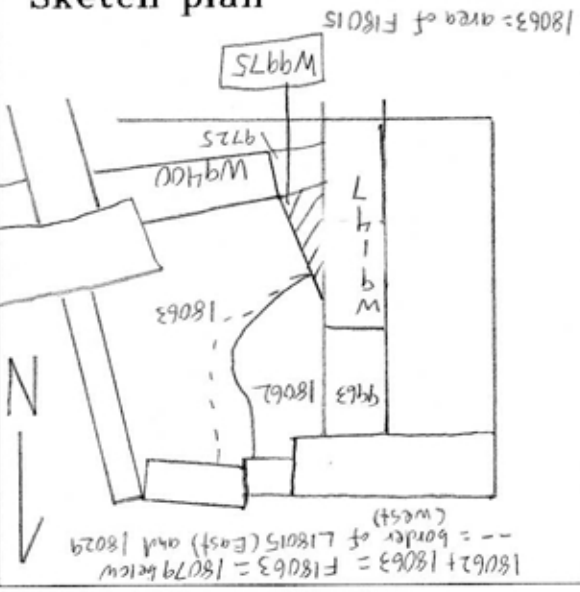
The relation of W9975 to W9400 to SE is uncertain due to incomplete excavation of [L9725] and [W9400]

Additional Photos: 117758-59
 Additional Observations/Value: Crummy section of wall, but it does provide west limit for room which yielded the Cypriote vessel. Phasing uncertain, at least G.

Locus

W 19975

Sketch plan



Photo

Photo

Section

Section