

Locus L 9977	Dor 19 <sub>3</sub>	Fld G <sub>1</sub>	Sq A, K, 32	Loc. type Persian Pit material. Fill material down to wall
Open	Date 3/02/93	High at 1.3.4.3 C	Low at 1.3.3.5 E	Seals: _____
Close	03/08/93	1.3.3.3 S	1.3.2.2 N	Sealed by: _____
Floor: type	_____	_____	_____	Locl 9547 9884 9958 _____
Length 1.4	Width 0.7	Vol _____	Drawn? _____	above _____
Value 14	Remove _____	_____	_____	below _____
Photo #(1) _____	Photo #(2) _____	Locl W 9993 _____		
Written by: A.R.M.	Checked by: J.R.2	_____		

Unit _____	Phase 4	Stage _____	Stratum _____	PoM _____
------------	---------	-------------	---------------	-----------

Summary \_\_\_\_\_

Opened: New locus under baulk material <sup>L9547</sup> to define W 9993 in the E

Limits (N) L 9891, 19958  
 (S) Baulk  
 (E) Western limit of 1932 pit L 9139  
 (W) L 9867

Closed: Came down on wall

Matrix: Brown sandy material with some pottery and bone. Pit material of L 9891: brown sandy material with a lot of pottery and bone. [L 9867] red-brown sandy material with pottery and bone. W 9993 consists of lead size flintstones. L 9958: brown sandy material on the level of [L 9997]

Relations: L 9547 covers but does not seal [L 9977]. [L 9977] covers but does not seal W 9993. The E bulk of Ak32 covers but does not seal the E end of [L 9977]. To the N [L 9977] is cut by the pit L 9891, and probably continues into L 9958. To the S [L 9977] appears to continue into the baulk. To the W [L 9977] might continue into L 9867. (both loc fill material). To the E [L 9977] is probably cut by pit L 9139 of 1932, which is the continuation of pit L 9891.

Additional Observations/Value: No specific value, material above W 9993 on E side

Photo

Section

Photo

Section

L 9977

St Lc P2 P3  
Df St Ob Ma R C P1

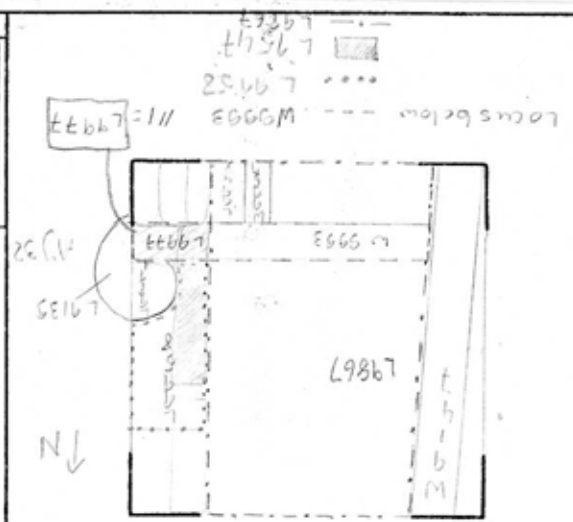
sa sh cr 0 u ir pr

sa ma bn u

sa sh cr 2 u pr

sa ma bn u

Sketch plan L9977



Sketch plan

L9977



L9135  
L9132

L9977

Locus below ---  
W9963 .....  
L9967 .....  
L9967  
L9967

L9867

L9963

L9977

t h i b m