

Locus W9983	Dor 1993	Fld G	Sq AA33	Loc. type FLOOR MAKEUP; FILL TO FLOOR
Open 02/08/93	High at 1A.1A W	Low at 1A.12 E	Seals: _____	
Close 06/08/93	1A.02 E	1A.01 W	Sealed by: _____	
Floor: type CF	1A.02 E	1A.01 W	Locl L9897	
Length 0.9	Width 0.8	Vol _____	above _____	
Value W	Remove / / /	Drawn? NO	below 1,2,5,3	
Photo #(1) 102088	Photo #(2) 102089	Locl UNEXCAVATED		
Written by: SSR	Checked by: JRZ	below 1,2,5,3		

Unit	Phase	Stage	Stratum	PoM
-------------	--------------	--------------	----------------	------------

Summary

Opened: IN ORDER TO EXCAVATE BELOW F9897

Limits (N) BOUNDED BY W9989

(S) BOUNDED BY FILL BELOW W9096

(E) BOUNDED BY BANK WITH AG33

(W) BOUNDED BY W9936

Closed: NOT CLOSED - END OF SEASON

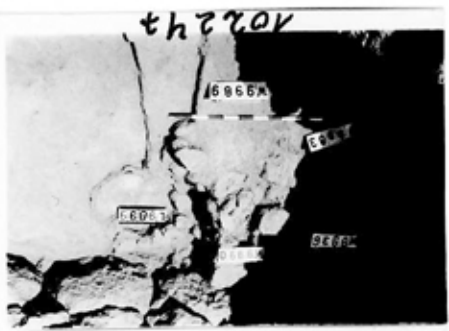
Matrix: MODERATELY COMPACT SANDY SILT WITH INCLUSIONS OF MUDBRICK-DEBRIS. F9897 IS A CRUSHED KURKAR FLOOR OF LOW DENSITY. F9983 IS A PATCHY SANDY CRUSHED KURKAR FLOOR IN PRIMARILY ONE LARGE PATCH MEASURING 60CM ACROSS, AS WELL AS A FEW DOUBLE FIST SIZE PATCHES.

Relations: W9983 REACHES W9989 AND W9936, AND CONTINUES INTO THE FILL BELOW W9096 AND INTO THE BANK WITH AG33. IT IS COVERED BUT NOT SEALED BY L9897, AND IT COVERS BUT DOESN'T SEAL THE UNEXCAVATED MATERIAL BELOW. F9983 REACHES W9936 BECAUSE THE SOUTHERN EDGE OF W9989 HAS NOT YET BEEN FULLY DEFINED, THE RELATIONSHIP BETWEEN F9983 AND THIS WALL REMAINS UNCERTAIN. ONE OF THE RESURFACINGS OF F9896 IS AT THE SAME ELEVATION AS F9983 AND WHERE IT MEETS THE NORTH EDGE OF W9989 THE WALL FLOATS. THIS IS MOST LIKELY THE SAME CASE WITH THE SOUTHERN EDGE OF W9989 AND F9983.

Additional Observations/Value: MODERATELY IMPORTANT DUE TO THE FLOOR REACTIVES W9936.



Se



Section

L 9983

10. St Lc
11. Df St Ob Ma R C P1 P2 P3

4.05 sa sh cr 2 u ir1

4.05 sa ma bn u

4.01 tz sh cr 2 u ir1 ir2a

4.01 tz ma bn u

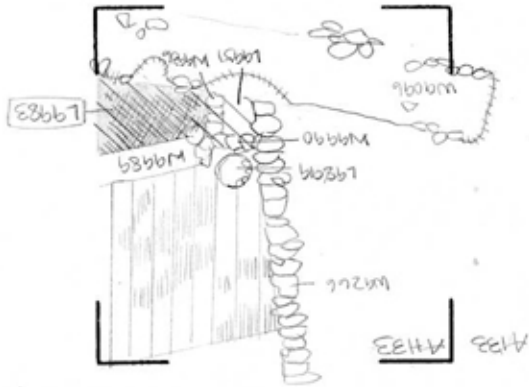
4.05 sa sh cr 2 u ir1 ir2a

4.01 tz tw st u

4.04 tz sh cr 0 u --
tallation

4.04 tz tw st u

- L989c
- F9983
- L989t
- F989t
- L9833



Sketch plan

1:100