

Locus 9987	Dor 19 9.3	Fld G	Sq A.K. 32	Loc. type F to floor and ash layer
Open Date 02/28/93	High at 13.68 N	Low at 13.66 S	Seals: _____	
Close Date 04/08/93	13.51 N	13.49 S	Sealed by: _____	
Floor: type C.F.	13.68 N	13.60 C	Locl 9906 _____	
Length 0.9	Width 0.7	Vol _____	above _____	
Value 14	Remove 04/08/93	Drawn? YES	Locl 9992 _____	
Photo # (1) 102 041	Photo # (2) 102 042	Locl 9995 _____	below _____	
Written by: ARM	Checked by: J.R.Z.			

Unit	Phase	Stage	Stratum	PoM
------	-------	-------	---------	-----

Summary

Opened: Came down on pavement in S part of [L 9906], which became [L 9942] N of the pavement, [L 9987].

Limits (N) Bulk
(S) [L 9942] and [L 9958]
(E) [L 9884] and [L 9931]
(W) [W 9992]

Closed: Came down on narrow piece of [F 9987] and ash layer.

Matrix: Brown sandy material without a lot of pottery or bone, on the bottom we came down on the same black ash as in [L 9958]. On top of the ash in [L 9958] we had brown sandy material small stones and smashed pottery (one bit of) [L 9942] consists of big flat rocks. In [L 9884] we had material with a lot of mudbrick debris and rubble. [W 9992]

Relations: continuation of matrix 3 head size rocks. Different levels of floor frag-ments were found on side and under W 9992. Very white (kirkar / lime? floor) thin floors.

Relations: [L 9906] covers but does not seal [L 9987]

To the N [L 9987] appears to continue into the bulk

To the E [L 9987] reaches [W 9992] and partly covers it

To the W [L 9987] might be reached by [L 9884] and [L 9931]. The black ash appears in the eastern section of [L 9931] and in the SE corner of [L 9958]

To the S [L 9987] may reach [L 9942]. Lower [L 9987] continues into [L 9958]

Since the floor fragments of [L 9987] extend into [L 9987]

2-3 resurfacings of [F 9987] were visible. One reached W 9992, probably making it equal to F 9958 which also reaches W 9992. At least one surface continues under W 9992. Together [F 9987], W 9992 and F 9958 cover, but do not seal, L 9995; the floors/wall are too narrow and sinuous to seal anything. [F 9987] may be a continuation of F 9410 in AJ32.

The ash layer slopes considerably downward E-W. It is found in L 9931, L 9958, L 9995 as well as [L 9987].

Additional photo's: 102 043 - 049

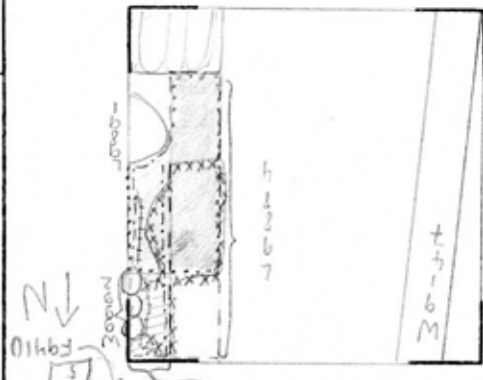
Additional Observations/Value: No specific value. deposit with floor frag-ment

L 9987

=====
Locus Basket List
=====

Bask. No.	Sq.	Bag. Ele.	Clo. Ele.	St Df	Lc St	Ob	Ma	R	C	P1	P
Comments											
160051	AK32		13.68	13.67	sa		sh	cr	2	u	ir1
pottery-- chalice											
160053	AK32		13.64	13.64	sa		sc	cr	2	u	ir1
sculpture-- zoomorphic vessel											
160056	AK32		13.68	13.49	sa		sh	cr	2	u	ir1
pottery											
160057	AK32		13.68	13.49	sa		ma	bn			u
bone											
160058	AK32		13.50	13.50	sa		tw	st			u
grinding stone											

L 9884 and L 9981 below it
 L 9842
 L 9958
 L 9958
 L 9906
 T 9958 and F 9987 (W 912 = L 995) below



Sketch plan



Section



Section