

Locus 9995	Dor 19 93	Flid 6	Sq A 4 32	Loc. type Floor makeup to ash layer
Open	Date 02/28/93	High at 13.52 S	Low at 13.45 S	Seals: _____
Close	04/28/93	13.48 N	13.40 S	Sealed by: _____
Floor: type	_____	_____	_____	Locl 9992 9987 9958 _____
Length 0.7	Width 0.3	Vol _____	_____	above _____
Value M	Remove _____	Drawn? _____	_____	Locl _____
Photo #(1) _____	Photo #(2) _____	_____	_____	below _____
Written by: A.R.M.	Checked by: J.R.Z.	_____	_____	_____

Unit	Phase	Stage	Stratum	PoM
------	-------	-------	---------	-----

Summary _____

Opened: Went below floor fragments

Limits (N) Bank
 (S) L 9891
 (E) AT 32
 (W) The part of L 9987 + L 9958 which did not end on floor but on an ash layer
 Closed: Came down on ash layer + end of season

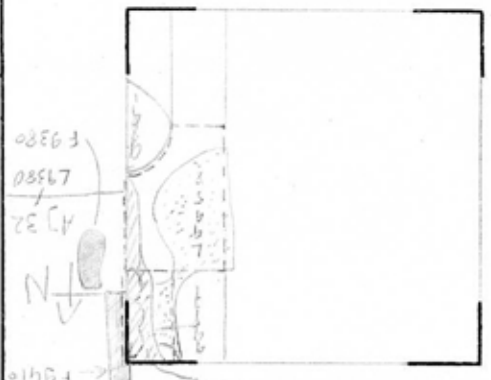
Matrix: Brown sandy material. Material below black ash L 9958 and L 9987 floor fragments. W 9992 lead size stones with floor underneath (floor underneath W 9992 not completely found though, but floor came out on both sides of W 9992). F 9958 and F 9987 very thin white floor fragments (lime / kvrkav?).

Relations: W 9992, L 9958, L 9987 cover but do not seal [L 9995]. [L 9995] covers but does not seal the ash layer (on bottom of L 9958, L 9931 and L 9958). To the N [L 9995] appears to continue into the bank. To the S [L 9995] might be cut by pit L 9891. To the W relations uncertain. [L 9995] might reach the ash layer. But in the N [L 9995] covered the ash layer, in the S [L 9995] didn't cover the ash layer, but might reach it. The ash layer slopes down considerably to the W. As a result [L 9958] that was on top of the ash layer in the S is not only above but also W of [L 9995] (probably reached to L 9995). To the E relation uncertain [L 9995] probably continues under F 9410 or F 9380 material under F 9410 not described, material under F 9380 = fill to floor. F 9380 doesn't reach the western bank, but since it's a fragmentary floor it may have reached. The elevation of F 9958 is between 13.46 - 13.53. The elev of F 9380 is between 13.60 - 13.51. F 9410 between 13.76 and 13.65, on the other side in A 4 32 F 9987 of 13.60 - 13.42.

Note: [L 9995] might have extended to the W and SW to loci L 9987 and L 9958, where the floor was not preserved, but this is uncertain into the parts of just above the ash layer.

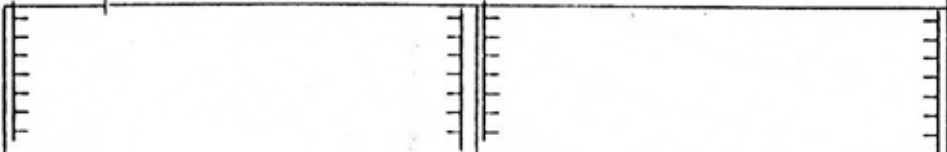
Additional Observations/Value: Small deposit between fragmentary floor and ash layer.

Sketch plan L9995



- ▨ L 9995
- ▨ L 9958, L 9984 and W9992
- ▨ Black ash
- ▨ F 9380 and F 9410

Section



Photo

