

Locus W 9998	Dor 1993	Fld G1	Sq A532	Loc. type Mudbrick wall
Open	Date 0.1/08/93	High at	Low at	Seals: _____
Close	0.9/08/93	_____	_____	Sealed by: _____
Floor: type	_____	_____	_____	Locl above
Length	0.5	Width 0.3	Vol	9997 9996
Value	1	Remove	Drawn? No	_____
Photo #(1)	_____	Photo #(2)	_____	Locl below
Written by: J.R.Z	Checked by: J.R.Z	_____	_____	_____

Unit	Phase 9	Stage	Stratum	PoM
------	---------	-------	---------	-----

Summary

Opened: came down on 2 mudbricks in L9908

Limits (N) Pedestal below W9065
 (S) L9908
 (E) L9908
 (W) A532 balk
 Closed: Net closed - End of Season

Matrix: At present 2 mudbricks can be seen. One at least is 35 cm wide
 Height and length undeterminable at present. There was no time to get levels on
 the thing!!

Relations: W9998 technically was found at the base of L9908, but it is really covered,
 but not sealed by, L9996 and L9997, two connected sloping grey leveling fills or pits, which
 were only detected in section after being lumped in with L9908 and L9907.
 To the N: W9998 seems to extend below pedestal of W9065
 To the E: L9908 seems to reach W9998
 To the S: L9908 seems to reach W9998
 To the W: W9998 extends into the W balk

W9998 may ultimately make a corner with W9909. However, the area in between is
 much disturbed and no clear traces of connecting bricks are yet visible.

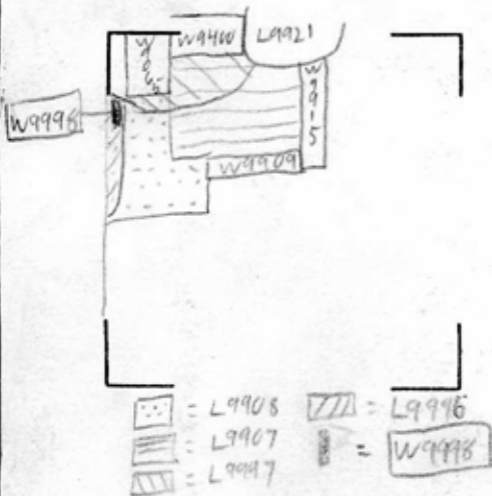
one course high + 2 bricks wide mentioned on W9909 card #1.


Additional Observations/Value: Nothing yet

Sketch plan

W9998

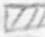
N ↑




 = L9908

 = L9907

 = L9909

 = L9996

 = W9998

Locus W 9998	Dor 1917	Fld G	Sq AJ32	Loc. type Mudbrick Wall on Stone Sockle (Card 2)
Open Date 07/07/97	High at 13.08 N ₁	Low at 12.77 S ₁	Seals: _____	Sealed by: _____
Close Date 08/08/98	High at 12.17 N ₁	Low at 12.08 S ₁	Seals: _____	Sealed by: _____
Floor: type Length 0.9	Width 0.2	Vol _____	Loci above _____	Loci below _____
Value 1	Remove _____	Drawn? _____	Loci above _____	Loci below _____
Photo #(1) See J519	Photo #(2) _____	Loci above _____	Loci below _____	Loci below _____
Written by: JCM	Checked by: JRZ	Loci above _____	Loci below _____	Loci below _____

Unit _____ Phase _____ Stage _____ Stratum _____ PoM _____

Summary

Opened: See previous Card

Limits (N) See previous Card

(S) L18230, L18241

(E) L18230, L18249

(W) Bulk

Closed: not closed, end of season.

Matrix: 3-2 courses of 14x48cm mudbricks (yellow + grey/brown). These measurements are misleading, however, because the bricks were cut at an angle in the bulk. The bricks bottom out at 12.70/12.39 (north/south). The stone sockle is made of 5 courses of 5cm² - 20x7cm² field stones. F18249 reaches the sockle at the above closing elevations.

Relations: Above: See previous card.

North: See previous card

South: L18230 above reaches the mudbrick of W9998, and L18241/F18241 reaches the stone sockle of W9998. W9998 seems to float above L18307.

East: L18230 reaches the mudbrick and upper stone sockle of W9998 and L18249/F18249 reaches the stone sockle.

West: W9998 continues into the bulk.

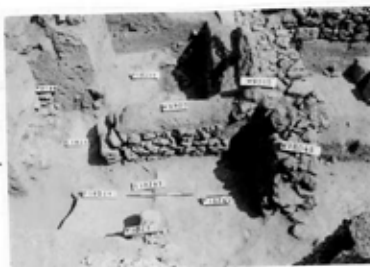
* 1998 - W9998 appears to actually be on E/W wall possibly forming a doorway with W9909. The stones to the north of W9998 are more likely fallen stones from a wall. W9998's sockle consists of 2 visible stones (lower course stone measuring - 55x50x20, upper course stone measuring - 40x26x10). Elevations on stone sockle are high - 12.24, low - 11.95.

Additional Observations/Value: High value.

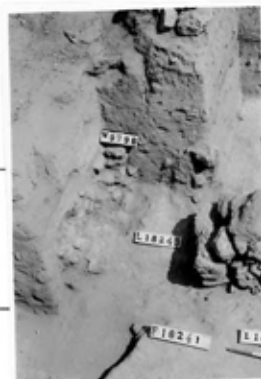
LOCUS

WJ 9998

Sketch plan



167634



167636

184705



184704



Locus W 9998	Dor 19 ₉₉	Fld G ₁	Sq A ₁ , 3 ₂	Loc. type WALL (CONTINUATION CARD)
Open 05/27/99	Date	High at 1.2-2.4 E ₁	Low at 1.1-6.6 W ₁	Seals: _____
Close 09/28/99		1.1-8.3 S ₁	1.1-3.1 N ₁	Sealed by: _____
Floor: type _____		_____	_____	Loci _____
Length 1.1	Width 0.8	Vol _____		above _____
Value w ₁	Remove ___/___/___	Drawn? YES		Loci _____
Photo #(1) _____	Photo #(2) _____			below _____
Written by: KV ₁	Checked by: JR ₂			

Unit _____	Phase _____	Stage _____	Stratum _____	PoM _____
-------------------	--------------------	--------------------	----------------------	------------------

Summary

Opened: Already there from previous season(s)

Limits (N) _____

(S) _____

(E) 18372, 18394, 18413, 18412

(W) _____

Closed: [W 9998] IS FLOATING BUT NOT REMOVED

Matrix: ONLY A VERY SMALL PART OF THE WALL IS VISIBLE. ONE BIG STONE MAKES A DOORWAY WITH W 9909 TO THE EAST. ABOVE THAT TWO TO THREE COURSES OF PISTSIZE TO SMALL HEADSIZE FIELDSTONES ARE VISIBLE IN THE BALK.

Relations: ABOVE: SEE PREVIOUS CARDS

NORTH: } [W 9998] CONTINUES INTO THE BALK

SOUTH: }

WEST: [W 9998] CONTINUES INTO THE BALK

EAST: THE FILL OF LOC 18372 AND 18394 REACH [W 9998]. PART OF THE MUDBRICK OF 18413 REACHES THE BIG STONE BUT MOST OF IT CONTINUES UNDERNEATH IT (WALL IS FLOATING HERE, AS IN 18412). THE RED SOIL AT THE BOTTOM OF 18413 CONTINUES UNDERNEATH IT. * [W 9998] IS FLOATING IN 18412 AND 18413.

BELOW: NO RELATIONS YET

SINCE THE CONSTRUCTION METHODS AT THE BOTTOM OF BOTH [W 9998] AND W 9909 ARE SIMILAR AND THEY ARE CONNECTED BY 18413, BOTH WALLS ARE CONTEMPORANEOUS.

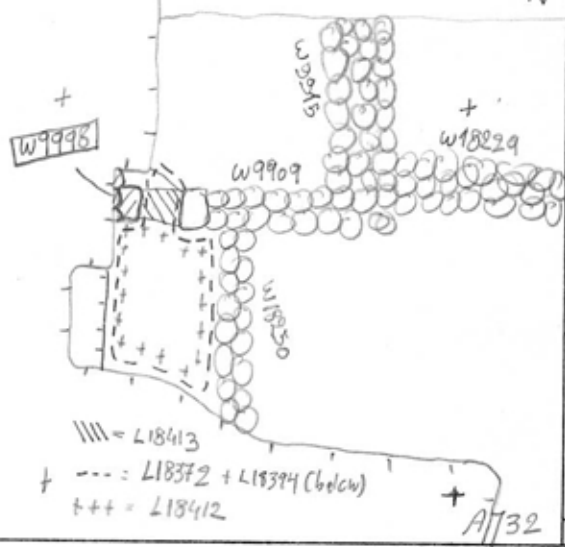
* F 18371, F 18372 and F 18394 could not be shown to reach [W 9998] though this seems likely as these floors connect "rooms" the north and south of doorway between w9909 + [W 9998].

Additional Observations/Value: HIGH VALUE (NEEDS FURTHER EXPOSURE)

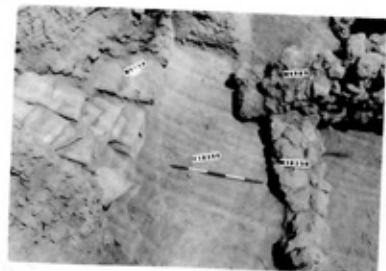
Locus

W 9998

Sketch plan



184523



185103

Photo

Section



Section

